

The logo for Steltix, featuring the word "steltix" in a bold, lowercase, sans-serif font. The letters are black and set against a light gray rectangular background.

This document contains the Version Workbench 3 Install Guide

Copyright © 2009 Steltix. All rights reserved.
Reproduction in whole or in part without permission is prohibited.

Version	3.0
Date	19 February 2009
Author	Andre den Hamer
E-mail	andre.den.hamer@steltix.com
Internet	www.steltix.com
Telephone	+31 (0)30 65 82 550
Fax	+31 (0)30 65 82 560

Table of Contents

Boomerang Setup	3
Importing a Boomerang package	3
Post-Deployment Setup executable	4
Initial Version Workbench package	8
Post initial installation tasks	9
Update Version Workbench package	12

Boomerang Setup

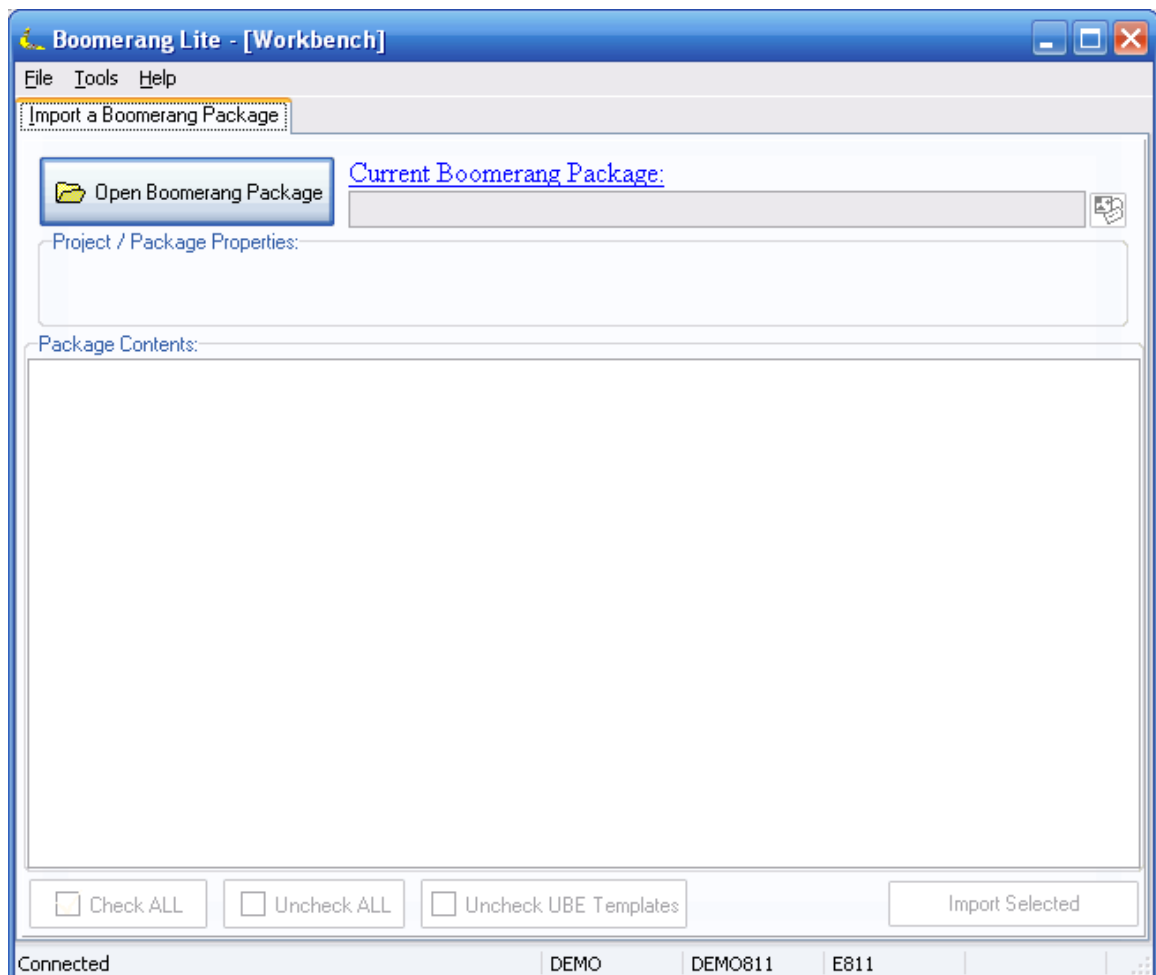
Version Workbench packages are delivered as Boomerang packages. For importing a delivered Boomerang package you can use the free of charge BoomerangLite tool available at www.everestsoftint.com or you may have a licensed Boomerang software installed.

Prerequisites for running the BoomerangLite setup are:

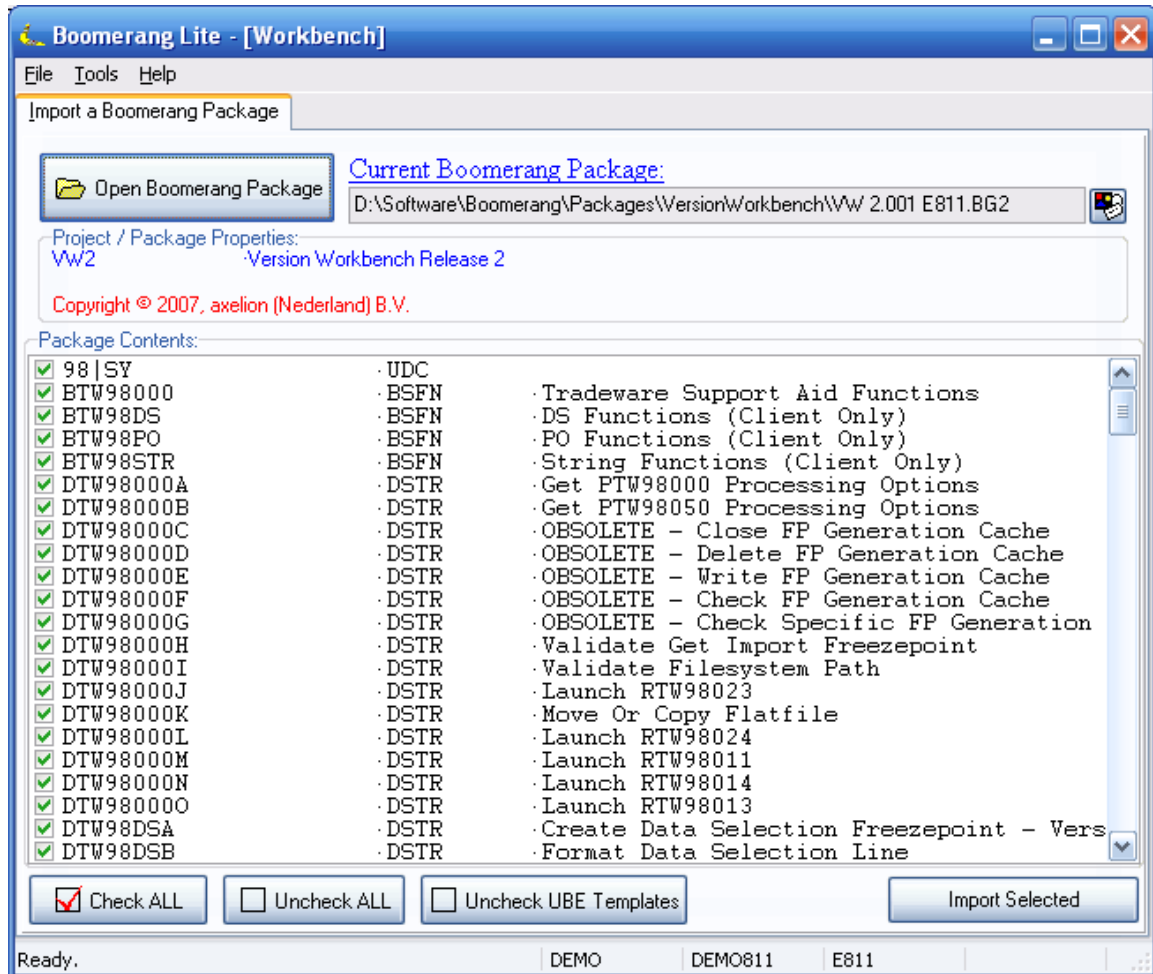
1. To be installed on a JD Edwards development client including C or .NET (release dependent) with an NTFS file system and a Windows 2000 or higher Operating System.
2. Logged on user running the BoomerangLite setup must have local administrator privileges.

Importing a Boomerang package

Logon to the JD Edwards Development environment and start the Boomerang application. In the Boomerang startup screen press F2 or choose File/Connect to connect to your JD Edwards session. When connected, the screen will look like this (screenshots in this document are taken from the BoomerangLite version):



Open the supplied Boomerang package for import by using the 'Open Boomerang Package' button and browse through your file system to select the supplied Version Workbench package. After confirming the Extended Properties screen the screen will look like this:



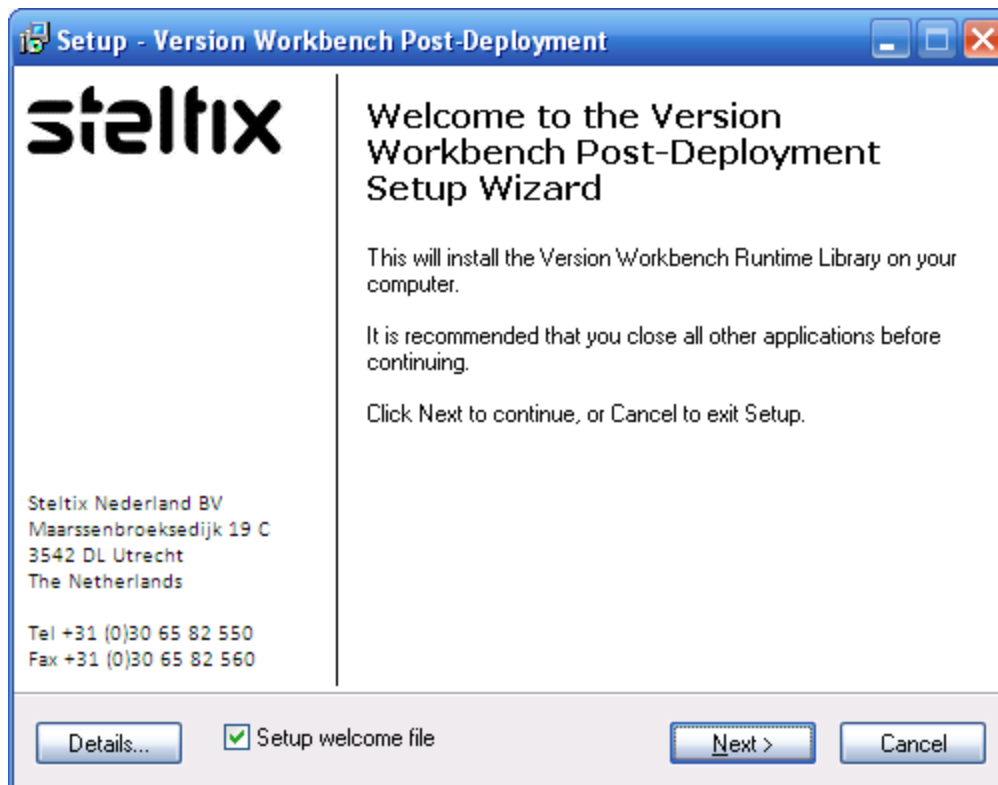
Now you are ready to start the import by using the 'Import Selected' button. Please proceed to the appropriate chapter for installing an initial or update Version Workbench package.

Post-Deployment Setup executable

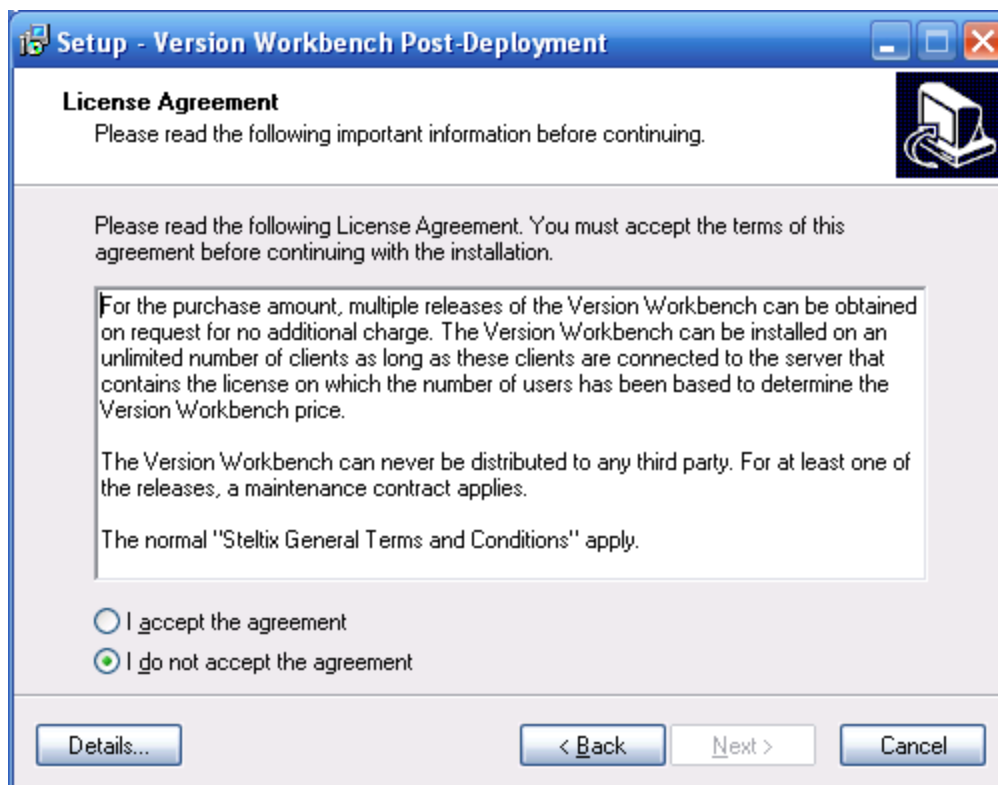
From Version Workbench release 2.1 a Post-Deployment Setup is delivered together with the Boomerang (Update) package. This Setup needs to be executed on each workstation where the Version Workbench is used after a Version Workbench update package containing any of the C business functions or after a Full Package installation on the workstation. The Version Workbench will recognize this when needed and prompt the user when execution of the Setup is needed. It is recommended to save the delivered Setup executable in a central network location for Third Party software setup files (e.g. the Third Party software directory located in the OneWorld Client Install directory on the deployment server).

It is possible to add the Version Workbench Post-Deployment Setup as a feature to your OneWorld packages. You should use the command-line syntax "...\\VersionWorkbenchSetup30.exe" and specify "/VERYSILENT" in the parameter box.

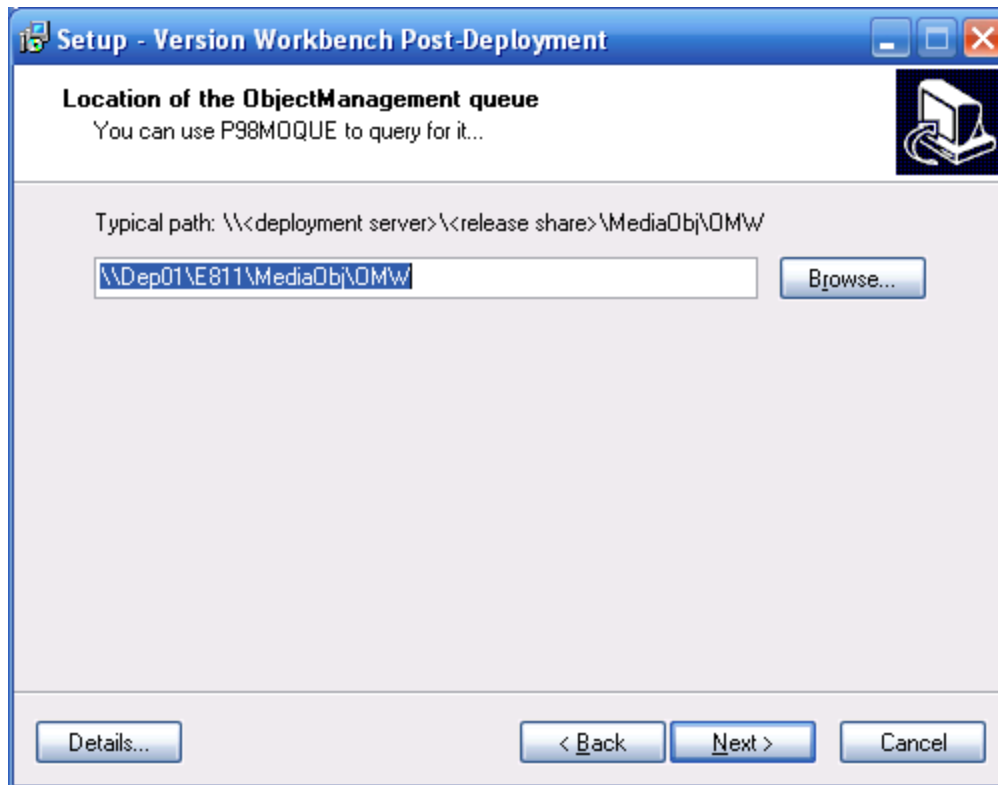
The screens of the VW Post-Deployment Setup:



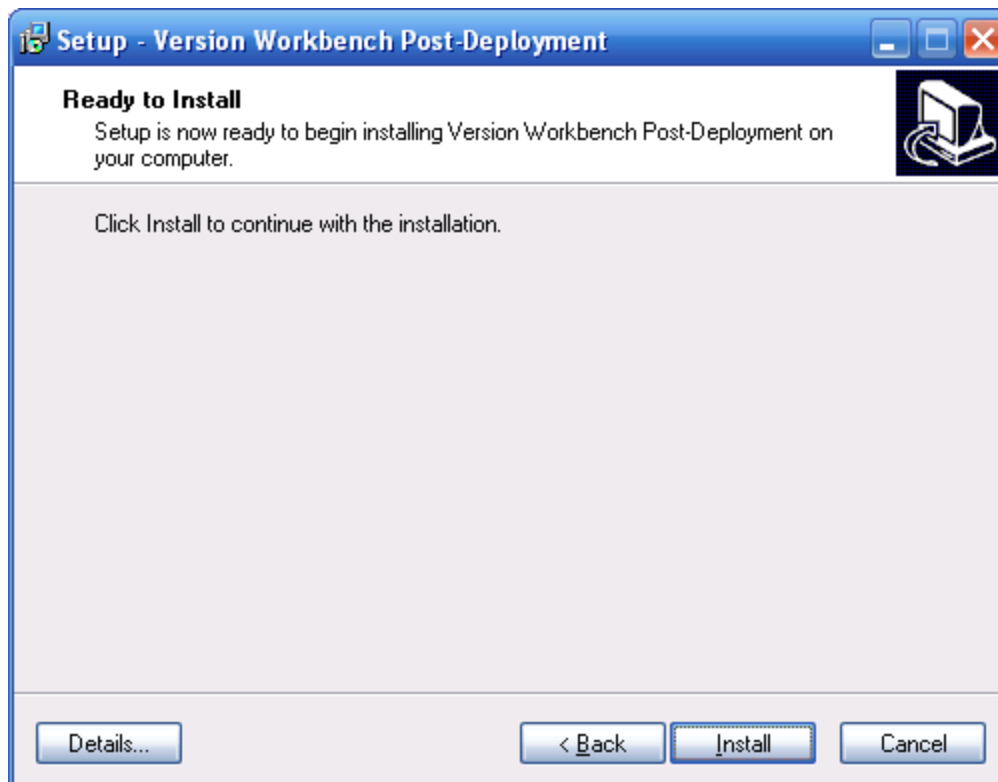
There is no need to close any application other than the Version Workbench before continuing with the setup. The Welcome file setup is optional, but recommended. You will need to specify the network location of your ObjectManagement queue. You only need to specify this location once per workstation, it will be stored in the registry and used from there in future executions.



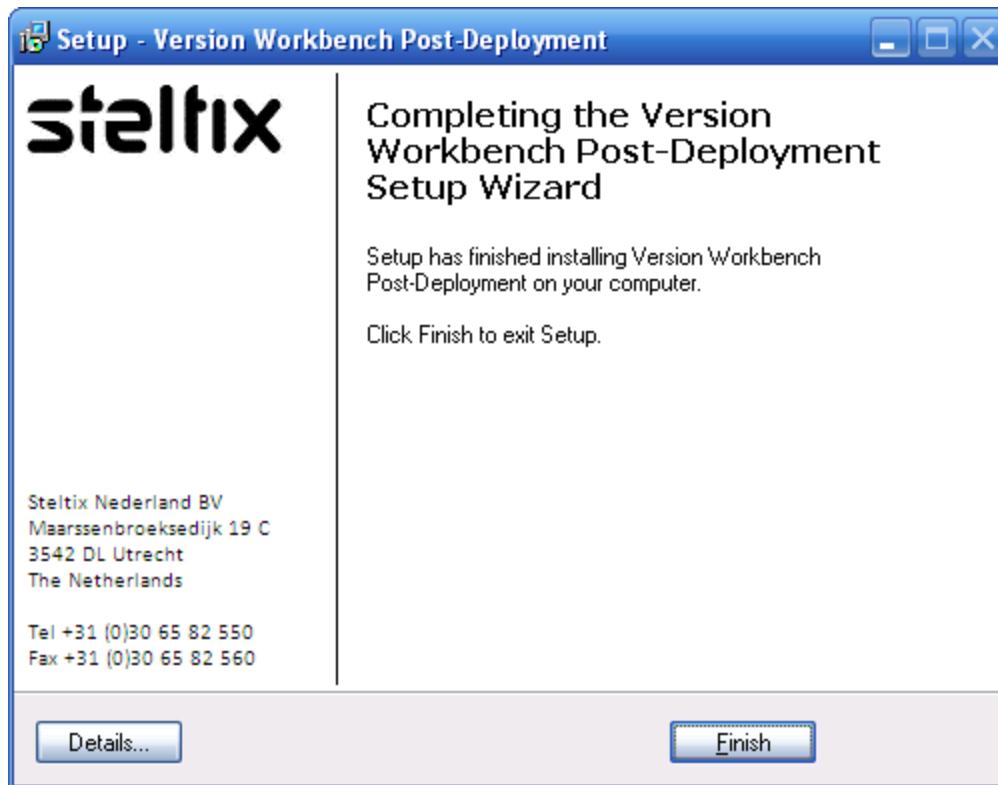
Accept the agreement and click Next to continue.



This screen will not show when the checkbox for the Welcome file setup was deselected on the first screen. An existing path is mandatory here.



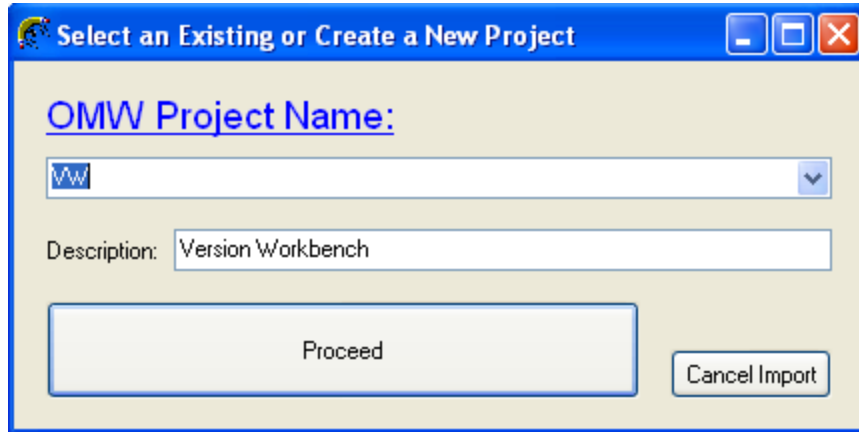
Click Install to perform the actual library copy and move to the Finish screen.



Click Finish to exit the Version Workbench Post-Deployment setup.

Initial Version Workbench package

When you have pressed the 'Import Selected' button in the Boomerang application, an OMW Project selection screen will come up:



Select an Existing or Create a New Project

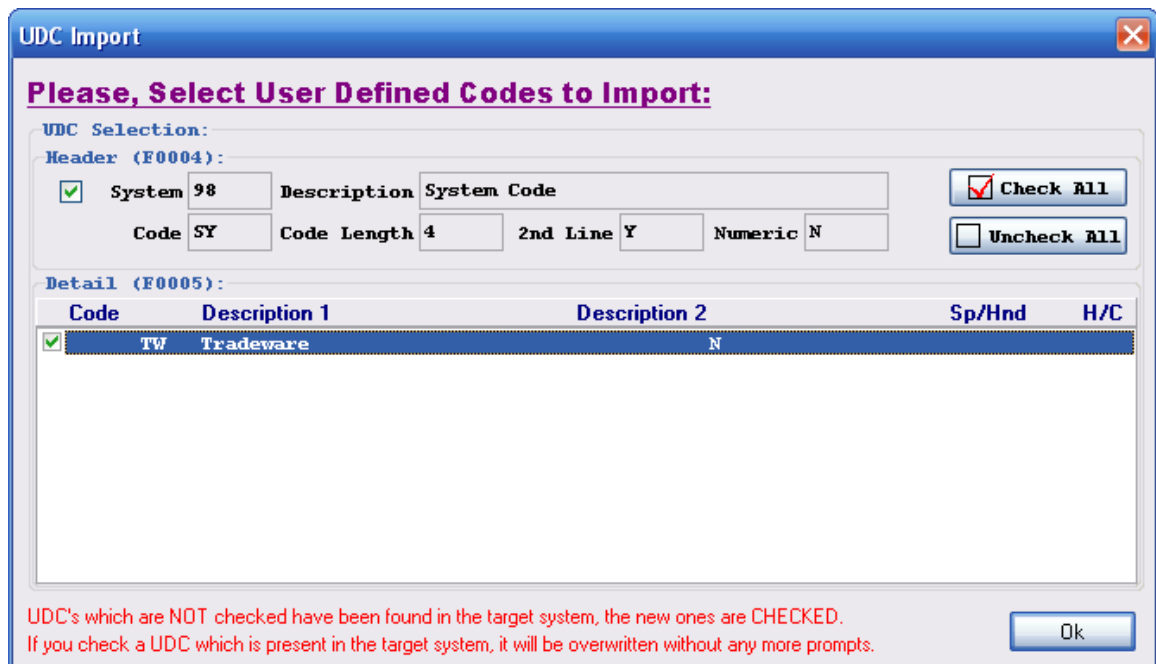
OMW Project Name: VW

Description: Version Workbench

Proceed Cancel Import

It is recommended to proceed with the project name supplied by the package (it will be created by Boomerang). However, you are free to select or specify a different OMW project.

Accept all six UDC import dialogs, any existing values will not be overwritten:



UDC Import

Please, Select User Defined Codes to Import:

UDC Selection:

Header (F0004):

<input checked="" type="checkbox"/>	System	98	Description	System Code	<input checked="" type="checkbox"/>	Check ALL				
	Code	SY	Code Length	4	2nd Line	Y	Numeric	N	<input type="checkbox"/>	Uncheck ALL

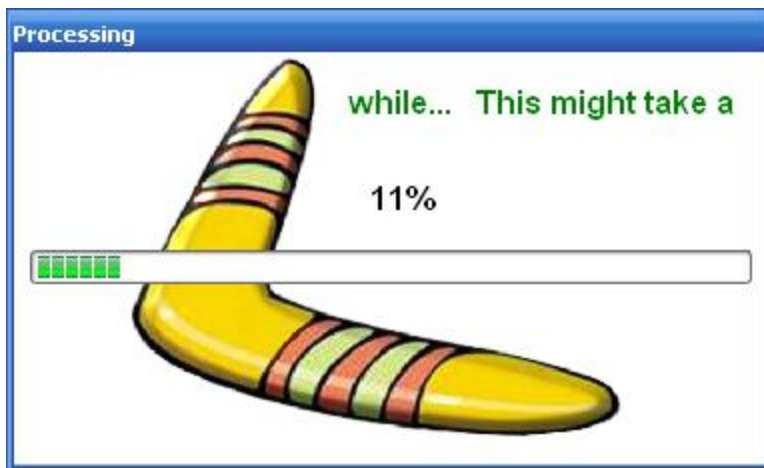
Detail (F0005):

Code	Description 1	Description 2	Sp/Hnd	H/C
<input checked="" type="checkbox"/>	TW	Tradeware		N

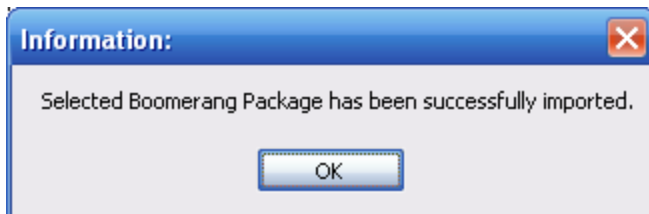
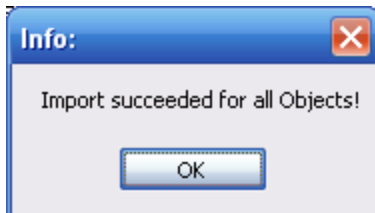
UDC's which are NOT checked have been found in the target system, the new ones are CHECKED.
If you check a UDC which is present in the target system, it will be overwritten without any more prompts.

Ok

The import process will now start and 'might take a While':



When the import is finished, there will be two dialogs for you to confirm:



Post initial installation tasks

Close the Boomerang application and re-logout to JD Edwards Development environment to clear any memory residuals and activate cached UDC values. First step is to create OCM entries for the Version Workbench tables and batch applications. Next step will be generating the tables and building the Business Functions in OMW. Final step will be a test run and then check-in of the project and promotion and deployment to all your system path codes.

Create OCM entries

Start the OCM application (P986110|ZJDE0001) and select the System data source. Add records for all Version Workbench FTW98* tables for all (non-J) environments in your system and make them active. The data source for these tables must be a central one (e.g. 'System' or 'Object Librarian'). It is recommended to make a copy of an OCM record for the F9860 table to start with. The Version Workbench tables to create OCM records for all environments in your system for:

1. FTW98010
2. FTW98011
3. FTW98020
4. FTW98025
5. FTW98030
6. FTW98031
7. FTW98035

8. FTW98036
9. FTW98040
10. FTW98041
11. FTW98042
12. FTW98043
13. FTW98044
14. FTW98050
15. FTW98900

The Version Workbench batch applications also need OCM records to map them to be submitted to local clients only. The Version Workbench batch applications to create OCM records for all environments in your system for:

1. RTW98012
2. RTW98013
3. RTW98014
4. RTW98020
5. RTW98023
6. RTW98024
7. RTW98025
8. RTW98030
9. RTW98031
10. RTW98032
11. RTW98035
12. RTW98036

Tables and Business Functions

Start the OMW application (P98220|ZJDE0001) and open the Objects node of the project where the Version Workbench package was imported to (default VW). Generate the Version Workbench FTW98* tables and note that they are generated in the central data source as specified in the OCM entries. Also, generate the FVW98* tables in the Business Data data sources for all your environments. After the tables are generated, build the business functions. First build the C business functions:

1. BTW98000
2. BTW98DS
3. BTW98PO
4. BTW98STR
5. BVW98100

Note

The C business functions will not build locally on pre E810 releases, since those releases cannot handle the imported new library CVWAX locally. In order to get the C business functions built for a local test run, you need to perform a 'build all...' from the Busbuild.exe application first. The Full Package deployment will take care of this for the proper deployment.

Then build the NER business functions:

1. NTW98000

2. NTW98DS
3. NTW98OMW
4. NTW98PO

Test run

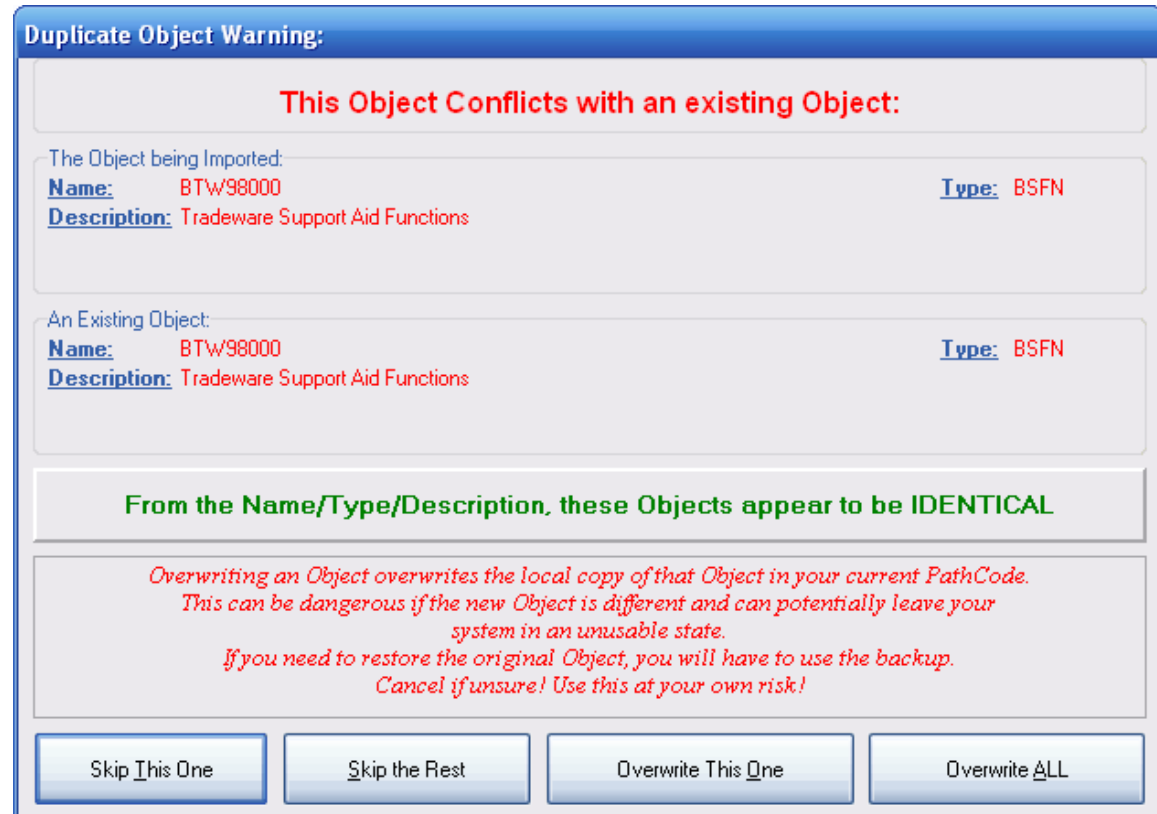
At this point you could perform a test run. From Version Workbench release 2.1 a Post-Deployment Setup is delivered together with the Boomerang (Update) package. This Setup needs to be executed on each workstation where Version Workbench is used after a Version Workbench update package containing any of the C business functions or after a Full Package installation on the workstation. The Version Workbench will recognize this when needed and prompt the user when execution of the Setup is needed. In order to perform a test run at this point you will need to execute the Setup. You will also need to enter a valid License key at first execution of the Version Workbench. Start the Version Workbench application by entering 'VW' in the fastpath.

Check-in

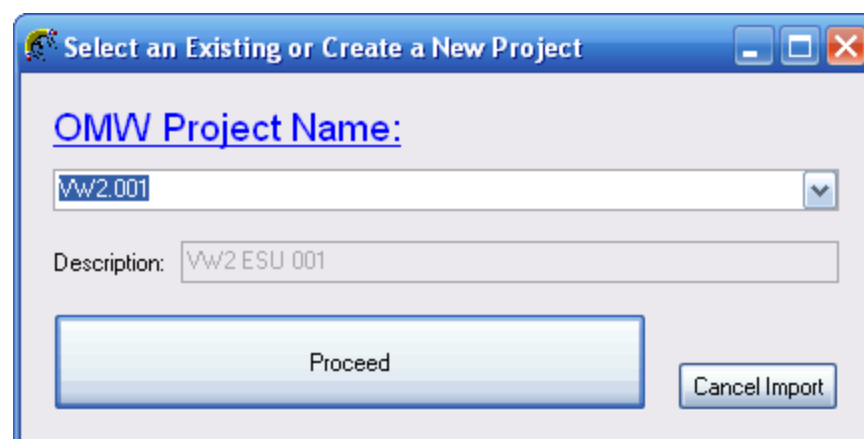
Start the OMW application (P98220|ZJDE0001) and select the Project node where the Version Workbench package was imported to (default VW). Press the Check-in button and verify that the check-in process produces no errors. Promotion and deployment by a Full Package to all your system path codes through normal procedures will finish the Version Workbench installation and have it operational.

Update Version Workbench package

When you have pressed the 'Import Selected' button in the Boomerang application, a Duplicate Object Warning screen most probably comes up:

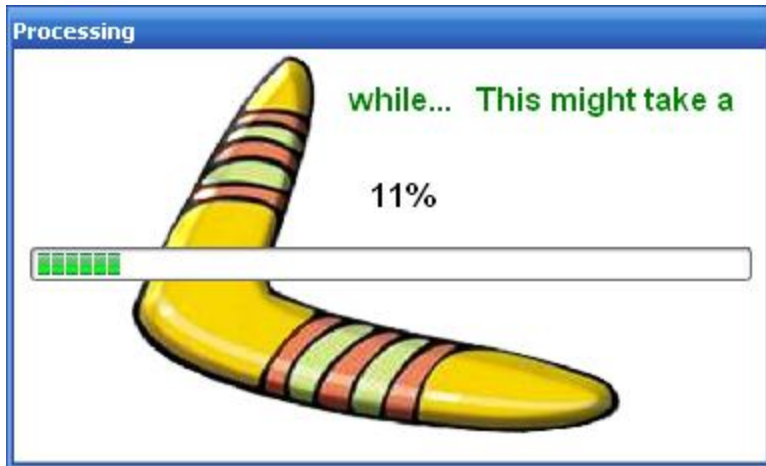


Since a Version Workbench update package will need to replace Version Workbench objects all objects in the update package need to overwrite the existing ones. You can either press button 'Overwrite All' once or 'Overwrite This One' for each object in the package.

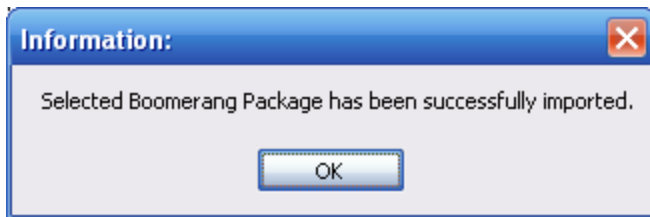
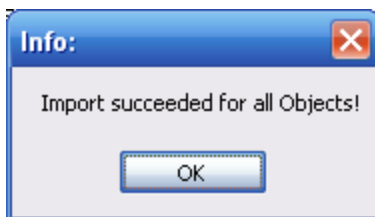


It is recommended to proceed with the project name supplied by the package (it will be created by Boomerang). However, you are free to select or specify a different OMW project.

If applicable to the update UDC import dialogs can appear. When proceeding, the import process will start and 'might take a While':



When the import is finished, there will be two dialogs for you to confirm:



When post import installation tasks are required, they will be supplied with the package delivery. To complete the update installation, the project needs to be checked-in, promoted and deployed to all your system path codes through normal procedures.

From Version Workbench release 2.1 a Post-Deployment Setup is delivered together with the Boomerang Update package. This Setup needs to be executed on each workstation where Version Workbench is used after a Version Workbench update package containing any of the C business functions or after a Full Package installation on the workstation. The Version Workbench will recognize this when needed and prompt the user when execution of the Setup is needed after the client installation of the deployed Version Workbench update package.