

---

# **Version Workbench**

---

## **User Manual**

---

## Colophon

Title	Version Workbench
Subject	User Manual
Version	V5
Date	28-Sep-10
Author	Steltix Nederland
E-mail	info@steltix.com
Internet	<a href="http://www.steltix.com">www.steltix.com</a>
Telephone	+31-(0)-30 658 2550
Fax	+31-(0)-30 658 2560

## Confidentiality

This Proposal is Confidential. The reader / user agrees not to disclose any parts of this document to any other 3<sup>rd</sup> party.

(C) 2010 Steltix Europe – All rights reserved

## Table of Contents

Colophon .....	2
Table of Contents .....	3
1. Version Workbench 3.0 .....	4
2. Customers talking .....	5
2.1 Sennheiser: Roll Out .....	5
2.2 Hilcona: Housekeeping .....	5
2.3 Beko: Version Control .....	5
3. Freezepoints .....	6
3.1 Types .....	6
3.1.1 Project .....	6
3.1.2 Named (Saved) .....	6
3.1.3 Imported .....	6
3.2 Operations .....	6
3.2.1 Explore .....	6
3.2.2 Save .....	11
3.2.3 Compare .....	12
3.2.4 Export .....	17
3.2.5 Import .....	18
3.2.6 Restore .....	19
3.2.7 Report .....	20
3.2.8 Delete .....	20
4. Version Management .....	22
4.1 Project Maintenance .....	22
4.2 Mass Copy .....	22
4.2.1 Project .....	22
4.2.2 Criteria .....	23
4.2.3 Selection .....	24
4.3 Mass Create .....	24
4.3.1 Project .....	24
4.3.2 Create .....	25
4.3.3 Processing Options .....	27
4.3.4 Data Selection .....	28
4.4 Mass Remove/Delete .....	29
4.4.1 Remove .....	29
4.4.2 Delete .....	30
4.5 Mass Updates .....	31
4.5.1 Processing Options .....	31
4.5.2 Data Selections .....	33
4.5.3 Version Revision .....	35
5. Task View Maintenance .....	40
5.1 Copy .....	40
5.1.1 Version replacement .....	41
5.2 Export .....	42
5.2.1 Review task structure .....	42
5.2.2 Import .....	43
5.3 History Overview .....	45
5.3.1 Audit report .....	45
5.3.2 Undo/Delete .....	46
6. Configuration .....	46
6.1 Role/status/path code for OMW development .....	46
6.2 Release .....	47

## 1. Version Workbench 3.0

When business requirements change, it is necessary to change option values on multiple versions of an interactive or batch program. Using the standard tooling available in EnterpriseOne, the option values have to be changed in every single version, one by one. Not only is this cumbersome, it is also error-prone. Now it is possible to make these changes simultaneously by using the Version Workbench Mass Update component for processing options. Imagine having to change the Sales Order status flow for a certain document. Without the Mass Update capabilities for data selections of the Version Workbench, you would have to evaluate every single version's data selection within the flow and evaluate whether it needs changing. With Version Workbench you can just select by QBE using the last or next status value and see which versions are using this as a selection and change it in one go for all versions!

Another common requirement is to be able to quickly identify which programs are using a particular data selection. For example, which UBE versions are selecting records out of the Sales Order Detail file on the Next Status equal to '540'? The Version Workbench Selection Explorer offers you a grid allows all standard JDEdwards grid functionality, such as QBE, Export, reformatting, etc.

The Version Workbench is designed to keep you in control of your processing options and data selections. Freezepoints are used to save processing option and data selection values. These Freezepoints can be used for browsing, documentation and comparing with other points in time and/or environments.

Versions go hand in hand with tasks. Tasks are the menu options in EnterpriseOne and typically use versions to identify what needs to happen when a menu option is chosen. The Version Workbench, starting with release 2.5, continues to deliver value by incorporating Task import, export, and copy capabilities in the Workbench. Use the Version Workbench to quickly copy (parts of) task view trees while changing to another version. With one click, all your business entities will have the same means of navigating through EnterpriseOne, but use their own versions!

This manual presumes basic EnterpriseOne knowledge. For more details on interactive or batch versions please refer to regular EnterpriseOne documentation.

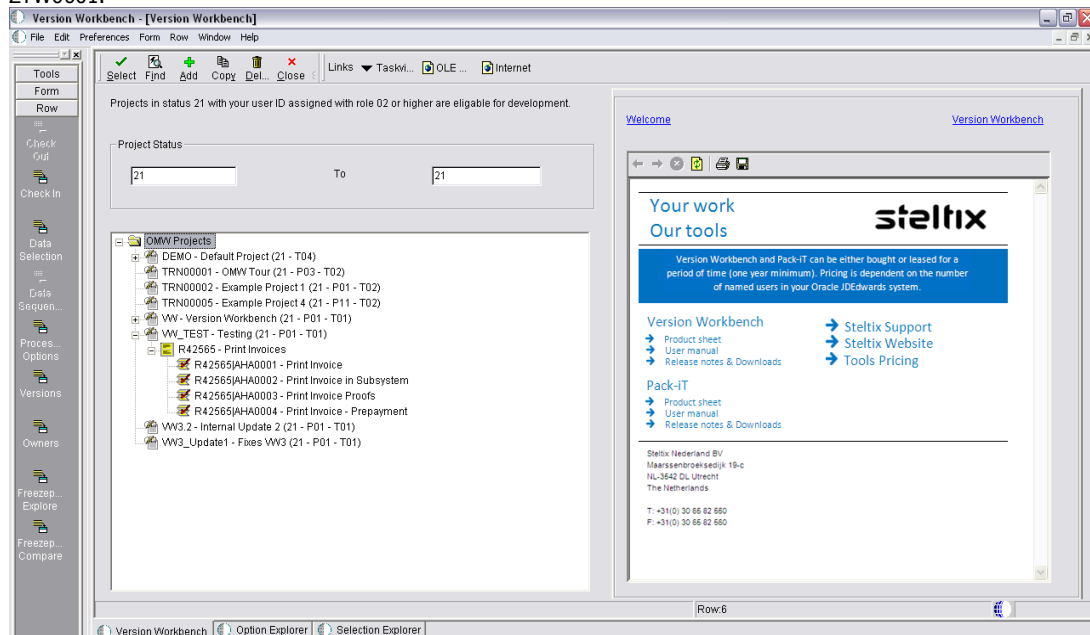
Do not modify EnterpriseOne reference versions identified by RIS, ZJDE or XJDE prefixes. Copy these versions or create new versions. This also applies for Steltix versions identified by a ZTW prefix.

The main application of the Version Workbench is PTW98040. This application will load specific versions of the Option Explorer and Selection Explorer available through tabs at the bottom of the screen.

Major differences between Version Workbench 2.5 and Version Workbench 3.0 are:

Generation of cross environment Freezepoints independent of the current environment using projects generated in OMW; Create/Remove/Delete object versions and Data selection Freezepoints

The version workbench application can be accessed using Fast Path command "VW", launching PTW98040, ZTW0001.



The main Version Workbench screen displays an OMW project tree at the left hand side of the screen and on the right hand side of the screen a text block that contains information about the currently selected object in the OMW project tree control.

Note: To ensure that Version Workbench code or any of your own existing custom functionality is not overwritten during upgrades, all of the Version Workbench objects are coded with custom product code TW.

## 2. Customers talking

Version Workbench has been used in various Companies for very different reasons. In this chapter, a few customers will explain how they use the Version Workbench, and how it helps them to be more efficient and more consistent in working with Versions.

### 2.1 Sennheiser: Roll Out



Sennheiser uses the Version Workbench mainly to be able to very quickly create the set of versions and associated menu entries for a new entity they roll out.

"We used to spent about three weeks to just copy versions", says Johan Giesberts, project manager of Sennheiser. "For each functional area, we had consultants in who basically copied versions. Once we started using the Version Workbench, we were able to not only copy versions, but also create the associated tasks and task views within 1 or 2 days".

A big benefit of using automatic copying is that it is impossible to make mistakes.

Sennheiser uses the following steps to be ready for the next company to roll into:

Use wildcards on Object Name and Versions name to identify the selection of versions to copy.

Identify the new prefix of the versions to create.

Copy all those versions.

Use wildcards to update data selections of the copied versions to select the new company number.

Use wildcards to make sure the new versions reference new versions when appropriate in their version tab. Use the wildcard replace function, to do this for all versions in one go.

Copy a task view into a new task view, and replace the versions referenced to make sure these tasks reference the new version.

### 2.2 Hilcona: Housekeeping



( für Besseresser )

Hilcona got the Version Workbench to make sure the Version naming scheme and the Version descriptions were as consistent as possible.

"During a project it is sometimes hard to make sure everybody involved uses the exact same methodology when creating and naming versions. And at the conclusion of a project it is just not worth the effort to really go after all those versions that are not entirely correct. But the Version Workbench gave us the means to go after them and make sure we delivered a completely consistent set of versions.", says Patric Zahner, implementation consultant.

Hilcona used the following features of the Version Workbench:

Copy Versions to update version references to a consistent naming scheme.

Mass update Version Descriptions using Wildcard replacements.

Mass update Queue names using Wildcard replacements.

### 2.3 Beko: Version Control



"To change one option consistently across all our Sales Order Entry Versions had just become impossible.", says Peter van der Linden, Support Manager of Beko. "With the Version Workbench, we can maintain all our versions as if it was only one."

Beko uses the following functions intensively:

Wildcard replacements to maintain option values for multiple versions at once.

Wildcard replacements to maintain data selection clauses for multiple versions at once.

## 3. Freezepoints

Freezepoints are the basic element in Version Workbench. Essentially, a Freezepoint is a table that contains Processing Option Data and Data Selection Data. As this is a regular Oracle EnterpriseOne table, it is easy to access using EnterpriseOne Applications.

A Freezepoint can contain:

Data selection and sequencing data and/or

Processing option data

for one or more environments at a particular moment in time.

A Freezepoint generation is performed by a batch program (RTW98012) which can not be submitted to a server as it will read local version specifications using client- only business functions.

The Freezepoint generator batch will be executed in asynchronous mode when the Refresh button is clicked in one of the Explorer screens for the loaded Freezepoint in the grid. Also manual execution of the Freezepoint generator through Batch Versions or a menu option is possible. If you would want to schedule the Freezepoint generator, appropriate OCM settings and a designated client are advised.

Manual execution of the Freezepoint generator will use the processing option setup of the Version Workbench main program. These options are ignored when the generator is executed interactively from one of the Explorer screens. Also data selection can be set up for a particular Freezepoint generator version. This will allow you to set up Version Workbench versions bound by e.g. Product Code or Version Prefix selection.

A Freezepoint can be generated from any path code or environment, allowing installation of Version Workbench 3.0 in only one environment sufficient.

A Freezepoint generation will have a fixed duration, because all versions will be evaluated.

Note: Generating a Freezepoint for processing options on a typical Demo Jr. Standalone installation takes about 15 minutes, generating a Freezepoint for data selections and sequencing takes about 5 minutes. This performance is dependent on hardware specifications.

---

### 3.1 Types

Freezepoints can be originated from three different sources, also called Freezepoint types:

- Project Based
- Named (Saved)
- Imported

#### 3.1.1 Project

See also: Project Based Explore, Project based Compare

Project based Freezepoints are generated from the main Version Workbench screen by selecting the project of which you want a Freezepoint followed by either clicking the Freezepoint Explore button or the Freezepoint Compare button from the Row Exit bar.

#### 3.1.2 Named (Saved)

See also: Save

Named (Saved) Freezepoints can be secured to prevent regeneration or purging. Fundamental difference to other types of Freezepoints is that with Named Freezepoints the Scope is attached.

#### 3.1.3 Imported

See also: Import

Imported Freezepoints can be used for cross system comparison especially when upgrading to a new release of JDEdwards EnterpriseOne.

---

## 3.2 Operations

Before being able to browse any data selection, data sequencing, or processing option data the Freezepoint data must be generated. The mass update components generate an instant "working Freezepoint" to ensure the latest local specifications. The explorer component works with the "Default" or "Named" Freezepoint.

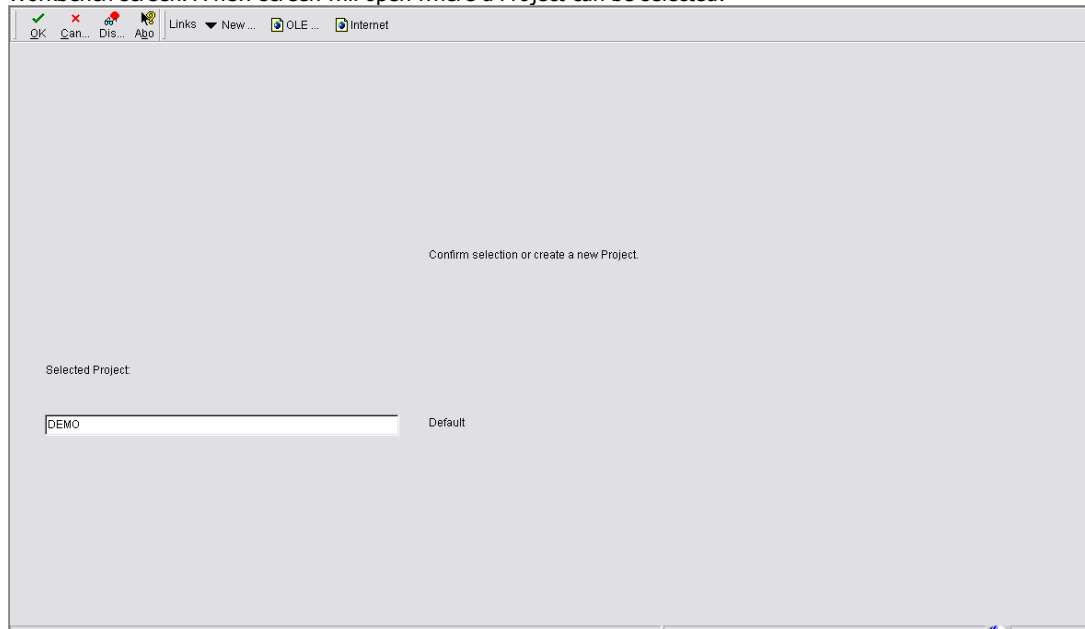
### 3.2.1 Explore

Data selections, data sequencing and processing options can be browsed and compared across all environments in a straightforward grid.

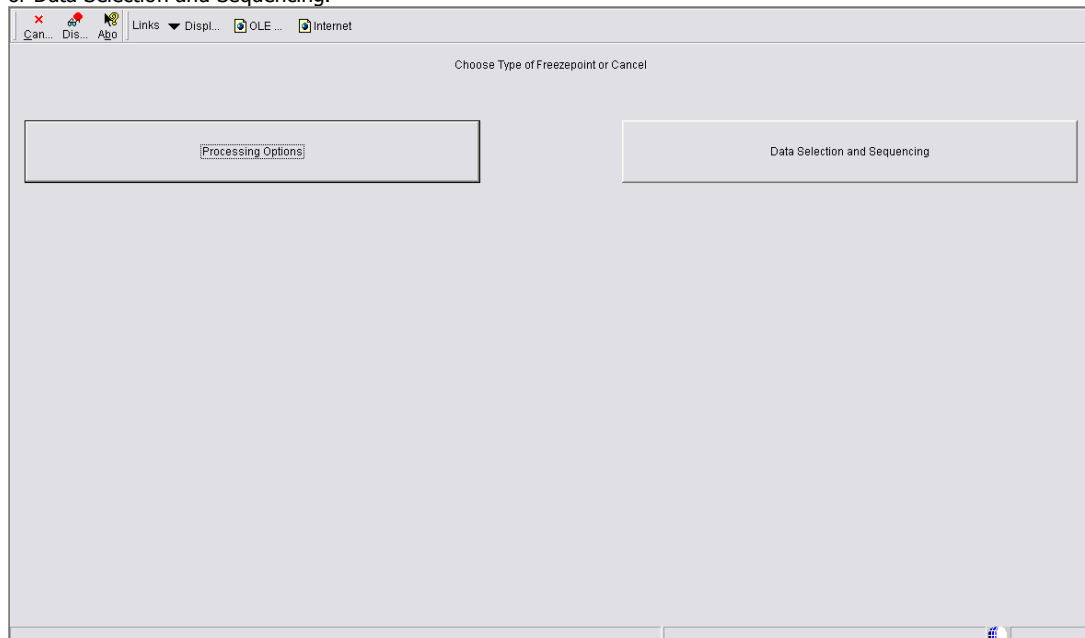
#### 3.2.1.1 Project Based Explore

See also: Project

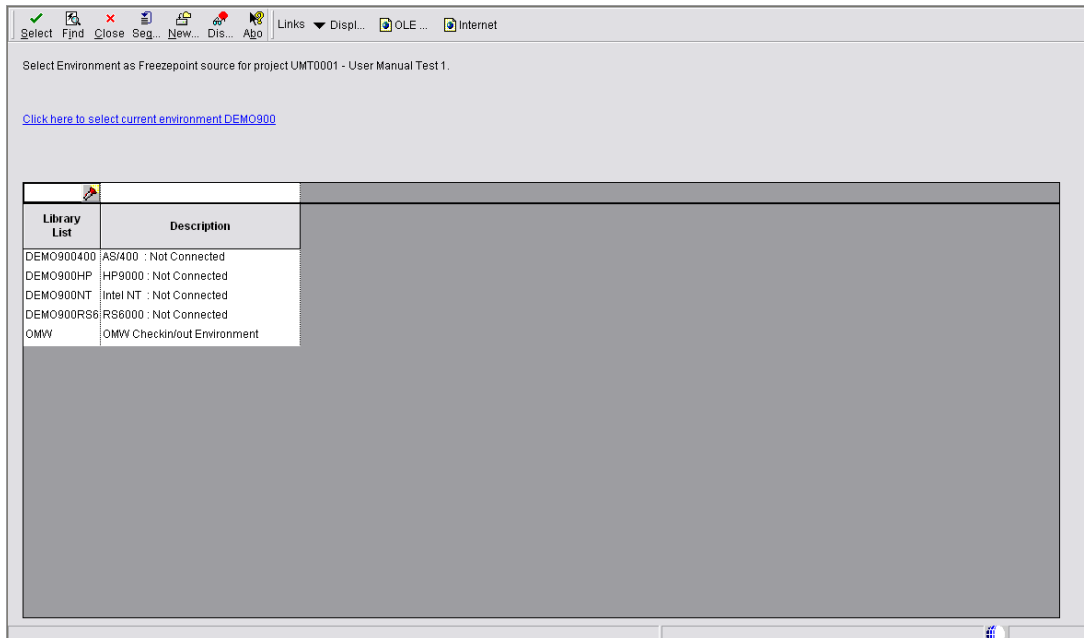
A Freezepoint explore can be generated by clicking the Explore button on the Row Exit bar from the main Version Workbench screen. A new screen will open where a Project can be selected.



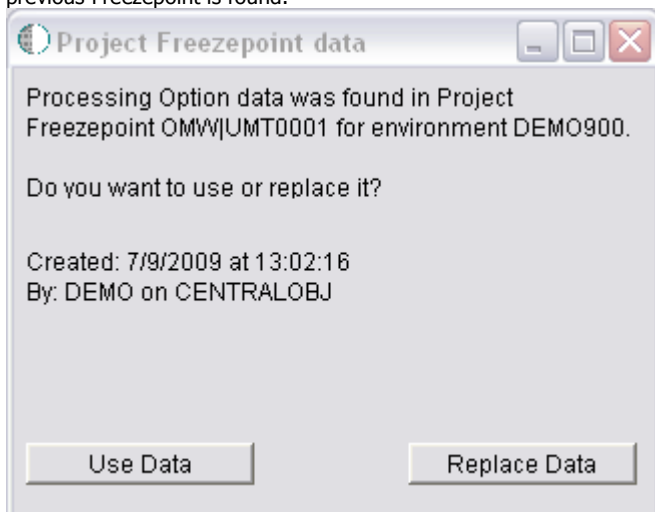
After selecting the Project a new screen will open where the type of Freezepoint can be chosen; Processing Options or Data Selection and Sequencing.



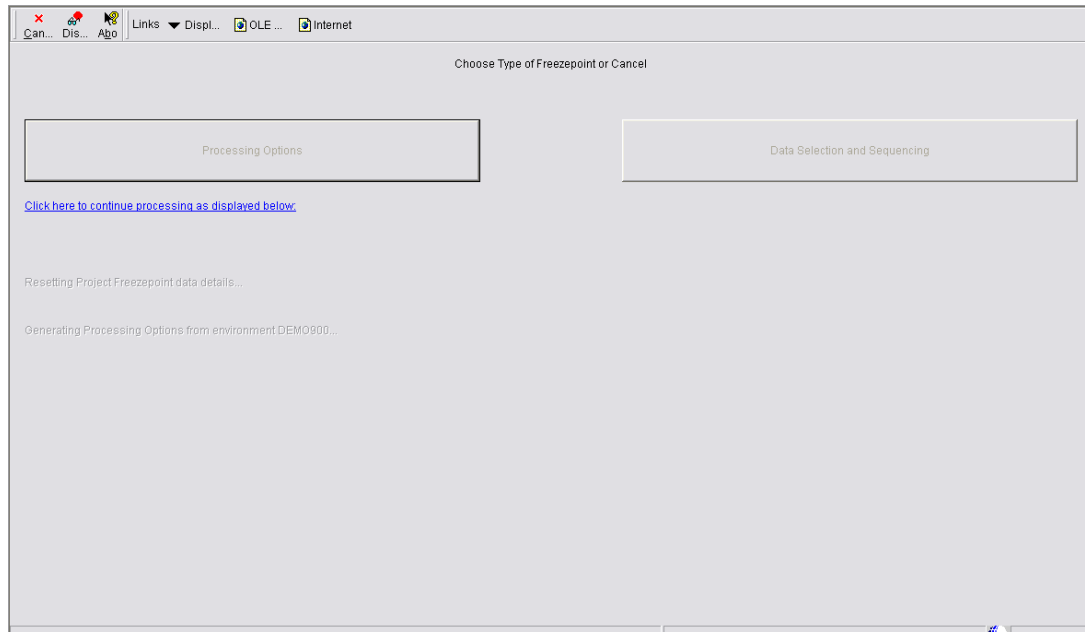
After clicking one of the buttons a new screen will open in order to select the environment.



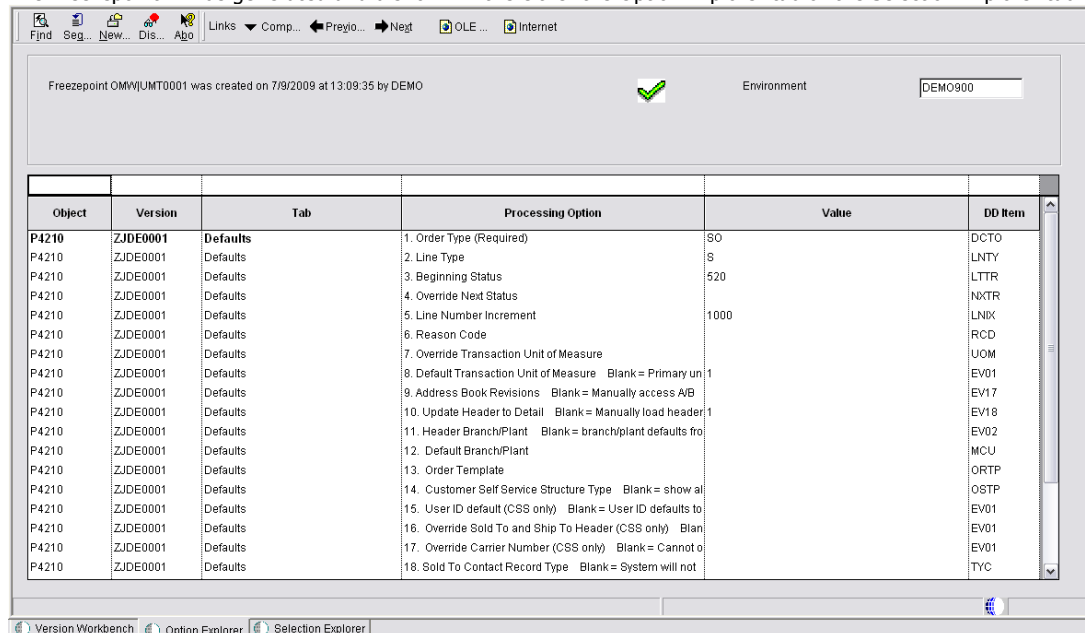
After selecting the environment the system will prompt you when processing option or data selection data of a previous Freezepoint is found.



When selecting to replace the data one should confirm the selection by clicking the continue processing link.

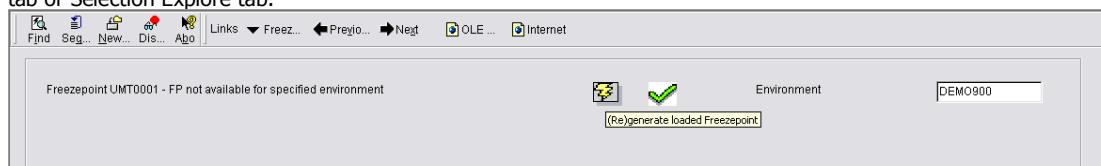


The Freezepoint will be generated and a shown in the either the Option Explorer tab or the Selection Explorer tab.



### 3.2.1.2 Option & Selection Explore

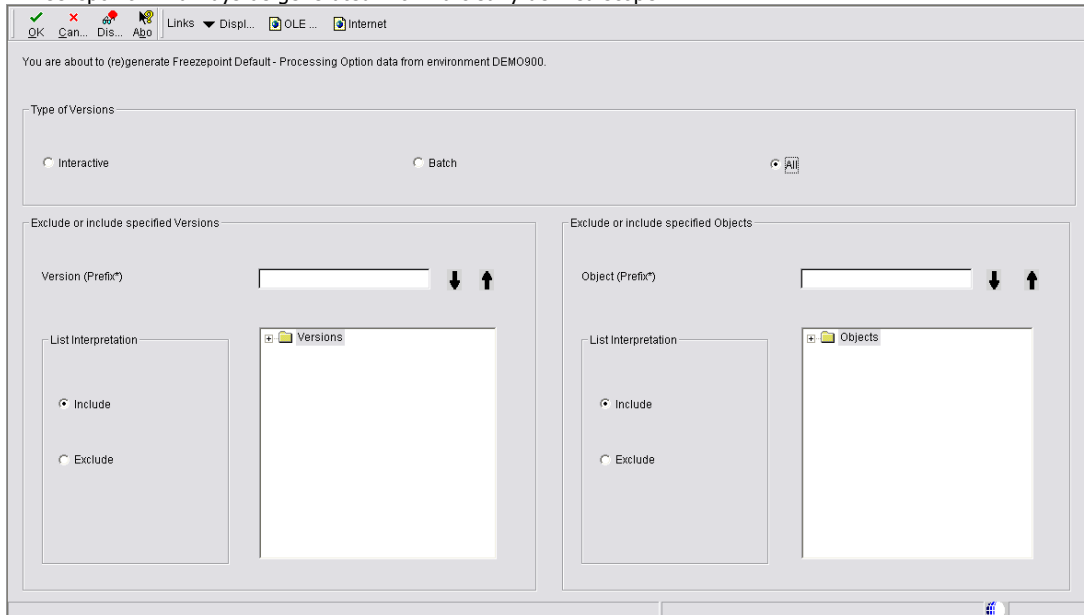
A Freezepoint compare can also be generated by clicking the (re)generate Freezepoint button on the Option Explore tab or Selection Explore tab.



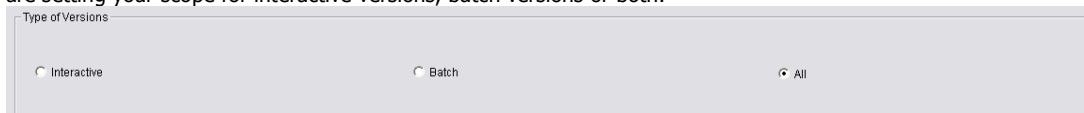
A pop-up will show with the text that it found or did not find any previous scoping. Click the OK button.



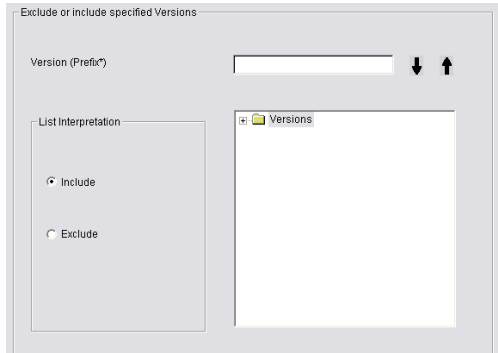
A Freezepoint will always be generated within a clearly defined scope.



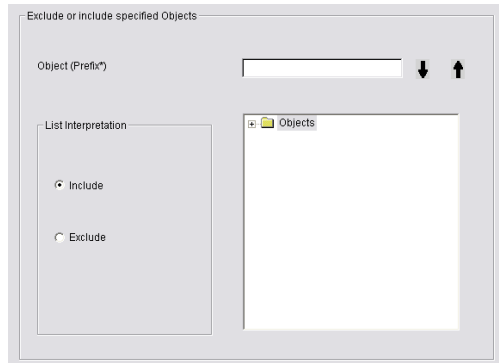
The screen in which a scope is defined displays three sections. The first sections allows you to select whether you are setting your scope for interactive versions, batch versions or both.



The second section on the left hand side defines the version(s) to be included or excluded. By clicking on the arrow buttons a version can be either added or removed from the scope.



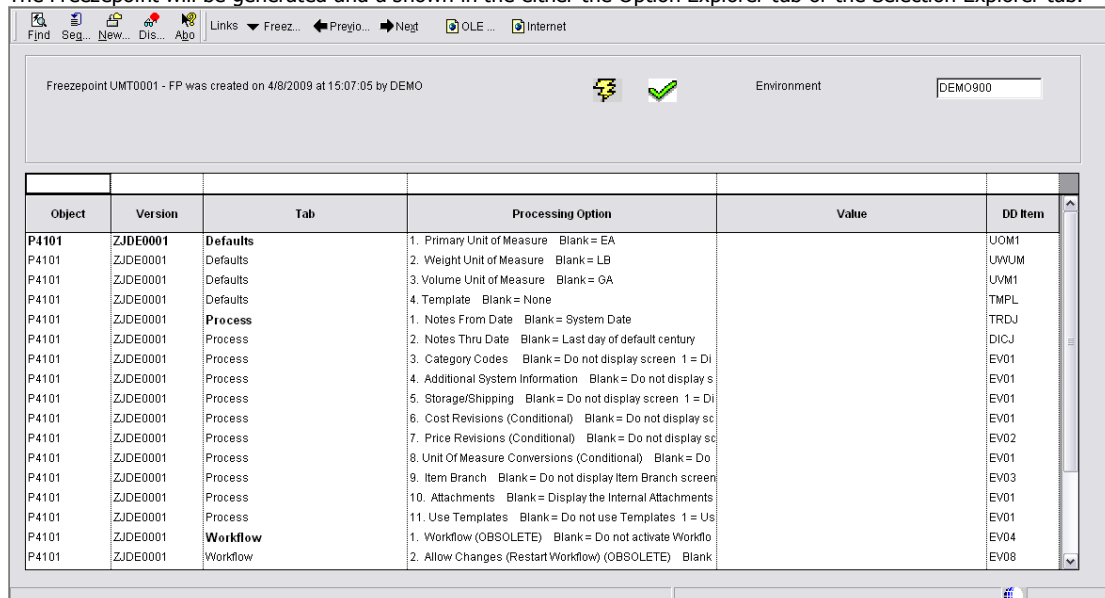
The third section on the right hand side defines the object(s) to be included or excluded. By clicking on the arrow buttons an object can be either added or removed from the scope.



After the scope of the new Freezepoint is defined click OK and a UBE will start. In order to view the generated Freezepoint click the "loaded Freezepoint is in use" button.



The Freezepoint will be generated and a shown in the either the Option Explorer tab or the Selection Explorer tab.



## 3.2.2 Save

See also: Named (Saved)

A generated or loaded Freezepoint can be saved by creating a Freezepoint record.

### 3.2.2.1 Create and save

Creating a Freezepoint record can be done by taking a Form Exit "Freezepoints".

Freezepoint	Data Selection Status	Processing Option Status
VersionWorkbench3.0.TEST		DEMO900 3/16/2009
IMP Default	DEMO 2/17/2009	DEMO900 2/17/2009
Install	DEMO 2/17/2009	DEMO900 2/17/2009
OMW WV_TEST	DEMO 2/17/2009, OMW 2/17/2009	DEMO900 2/17/2009, OMW 2/17/2009
TEST 2	DEMO 3/16/2009	DEMO900 3/16/2009
TEST 2.1		DEMO900 3/18/2009

Next a Freezepoint record should be created and named.

Freezepoint   Secured

### 3.2.2.2 Secure / Unsecure

A Freezepoint can be secured to avoid accidental removal or purging of a Freezepoint.

Tip: Generating a secured Freezepoint after a full package saves the configuration state for future reference.

### 3.2.3 Compare

Freezepoint data can be generated for multiple environments and different points in time. A Freezepoint compare for processing options, data selection or sequencing can be generated within or across Freezepoints. All Freezepoints can be compared to each other.

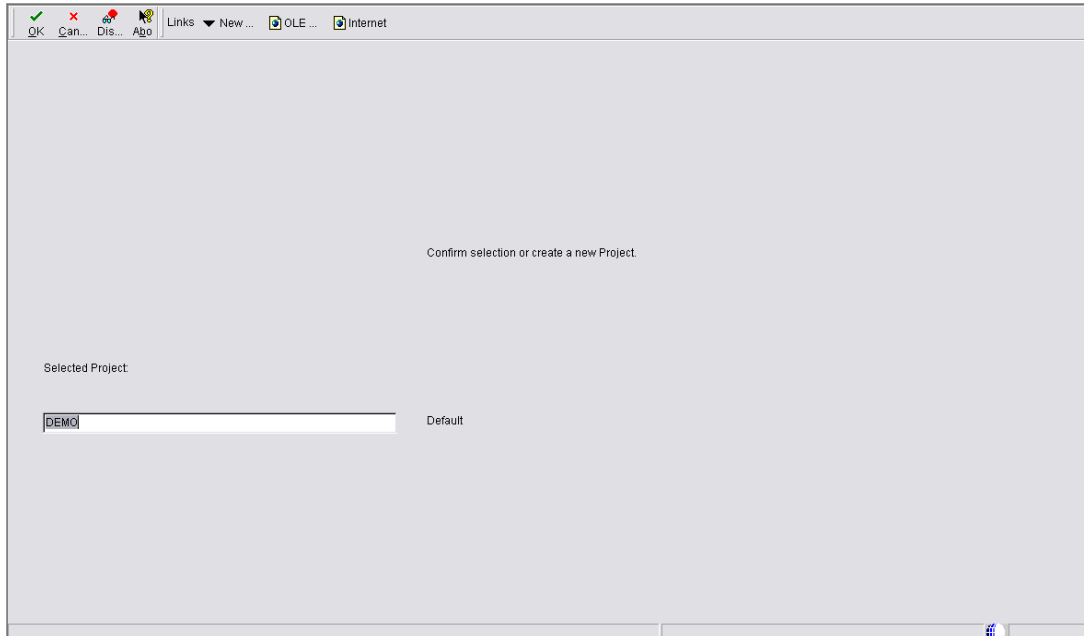
Today's configuration can for instance be compared to the setup as it was during a package built by (1) Generating an Instant Freezepoint (the default Freezepoint) and then (2) Comparing that with the Named Freezepoint Package built.

The results of a comparison are saved to allow a quick reload of the differences later. Only when one of the Freezepoints involved is changed, the compare will be regenerated when queried.

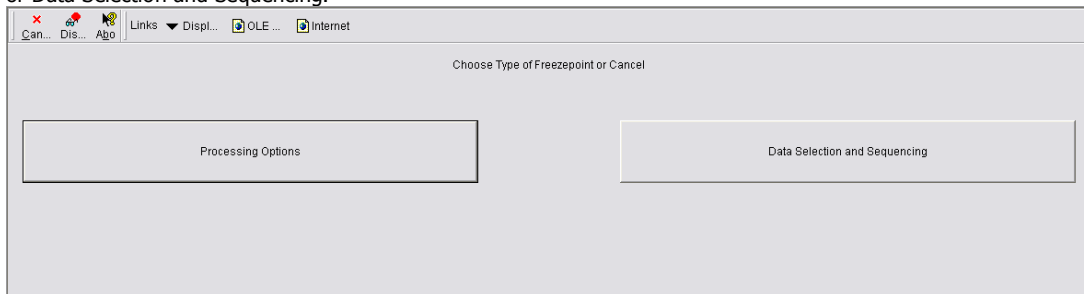
#### 3.2.3.1 Project based Compare

See also: Project

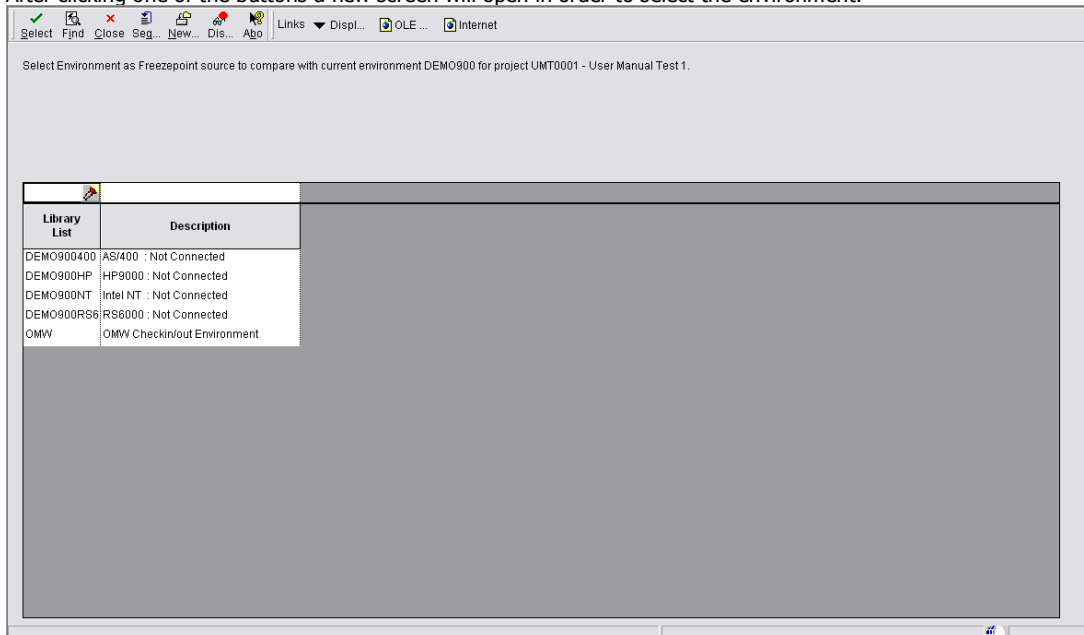
A Freezepoint compare can be generated by clicking the Compare button on the Row Exit bar from the main Version Workbench screen. A new screen will open where a Project can be selected.



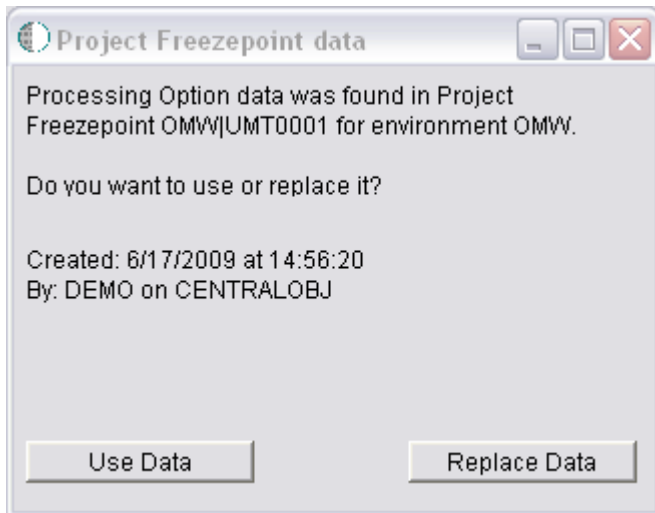
After selecting the Project a new screen will open where the type of Freezepoint can be chosen; Processing Options or Data Selection and Sequencing.



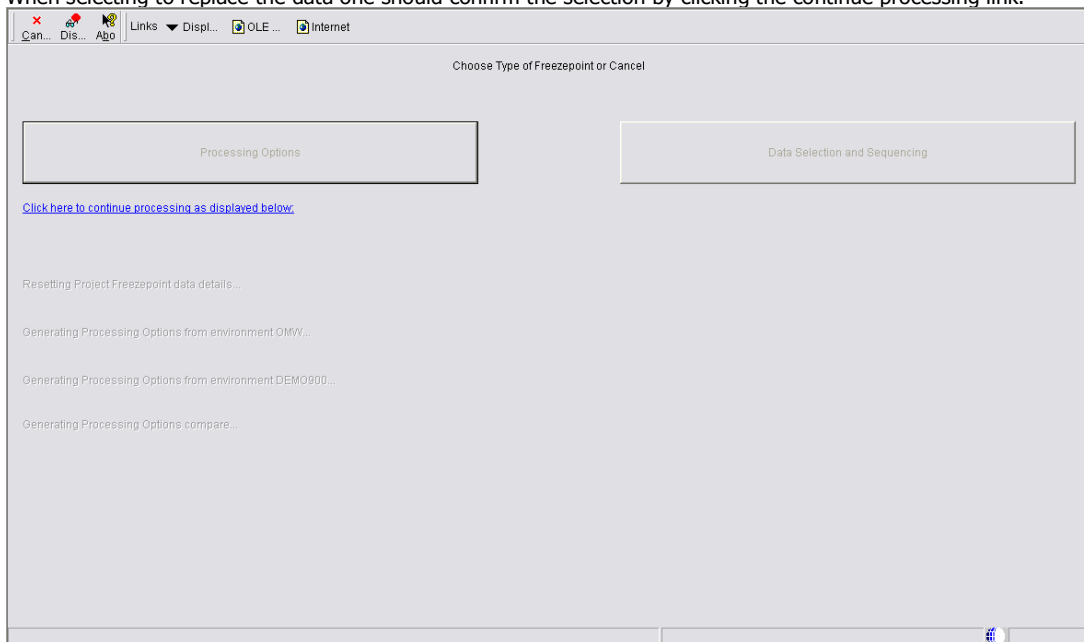
After clicking one of the buttons a new screen will open in order to select the environment.



After selecting the environment the system will prompt you when processing option or data selection data of a previous Freezepoint is found.



When selecting to replace the data one should confirm the selection by clicking the continue processing link.



The Freezepoint will be generated and a new screen/tab will open with on the left hand side the newly generated or current Freezepoint and on the right hand side the previous generated Freezepoint is shown.

Object Name	Version	PO Tab Text	PO Text	PO Value	PO Item	Compare Tab Text	Compare Text
P4210	ZJDE0001	Defaults	1. Order Type (Required)	SO	DCTO	Defaults	1. Order Type (Required)
P4210	ZJDE0001	Defaults	2. Line Type	S	LNTY	Defaults	2. Line Type
P4210	ZJDE0001	Defaults	3. Beginning Status	520	LTTR	Defaults	3. Beginning Status
P4210	ZJDE0001	Defaults	4. Override Next Status		NXTR	Defaults	4. Override Next Status
P4210	ZJDE0001	Defaults	5. Line Number Increment	1000	LNKX	Defaults	5. Line Number Increment
P4210	ZJDE0001	Defaults	6. Reason Code		RCD	Defaults	6. Reason Code
P4210	ZJDE0001	Defaults	7. Override Transaction Unit of Measur		UOM	Defaults	7. Override Transaction Unit of Measur
P4210	ZJDE0001	Defaults	8. Default Transaction Unit of Measure	1	EV01	Defaults	8. Default Transaction Unit of Measure
P4210	ZJDE0001	Defaults	9. Address Book Revisions Blank = M		EV17	Defaults	9. Address Book Revisions Blank = M
P4210	ZJDE0001	Defaults	10. Update Header to Detail Blank =	1	EV18	Defaults	10. Update Header to Detail Blank =
P4210	ZJDE0001	Defaults	11. Header Branch/Plant Blank = bra		EV02	Defaults	11. Header Branch/Plant Blank = bra
P4210	ZJDE0001	Defaults	12. Default Branch/Plant		MCU	Defaults	12. Default Branch/Plant
P4210	ZJDE0001	Defaults	13. Order Template		ORTP	Defaults	13. Order Template
P4210	ZJDE0001	Defaults	14. Customer Self Service Structure Ty		OSTP	Defaults	14. Customer Self Service Structure Ty
P4210	ZJDE0001	Defaults	15. User ID default (CSS only) Blank		EV01	Defaults	15. User ID default (CSS only) Blank

### 3.2.3.2 Option & Selection Compare

A Freezeport compare can also be generated by clicking the Compare button on the Form Exit bar. A new screen will open where a Freezeport and/or an environment can be selected.

After selecting the Freezeport and environment click OK and a new tab, Option Compare, will open.

Clicking on the Compare generation button will show the Freezeport compare result.

Object Name	Version	PO Tab Text	PO Text	PO Value	PO Item	Compare Tab Text	Compare Text
P4101	ZJDE0001	Defaults	1. Primary Unit of Measure Blank = E		UOM1	Defaults	1. Primary Unit of Measure Blank = E
P4101	ZJDE0001	Defaults	2. Weight Unit of Measure Blank = LB		UWUM	Defaults	2. Weight Unit of Measure Blank = LB
P4101	ZJDE0001	Defaults	3. Volume Unit of Measure Blank = G		UVM1	Defaults	3. Volume Unit of Measure Blank = G
P4101	ZJDE0001	Defaults	4. Template Blank = None		TMPL	Defaults	4. Template Blank = None
P4101	ZJDE0001	Process	1. Notes From Date Blank = System		TRDJ	Process	1. Notes From Date Blank = System
P4101	ZJDE0001	Process	2. Notes Thru Date Blank = Last day		DICJ	Process	2. Notes Thru Date Blank = Last day
P4101	ZJDE0001	Process	3. Category Codes Blank = Do not di		EV01	Process	3. Category Codes Blank = Do not di
P4101	ZJDE0001	Process	4. Additional System Information Bla		EV01	Process	4. Additional System Information Bla
P4101	ZJDE0001	Process	5. Storage/Shipping Blank = Do not d		EV01	Process	5. Storage/Shipping Blank = Do not d
P4101	ZJDE0001	Process	6. Cost Revisions (Conditional) Blan		EV01	Process	6. Cost Revisions (Conditional) Blan
P4101	ZJDE0001	Process	7. Price Revisions (Conditional) Blan		EV02	Process	7. Price Revisions (Conditional) Blan
P4101	ZJDE0001	Process	8. Unit Of Measure Conversions (Condi		EV01	Process	8. Unit Of Measure Conversions (Condi
P4101	ZJDE0001	Process	9. Item Branch Blank = Do not displa		EV03	Process	9. Item Branch Blank = Do not displa
P4101	ZJDE0001	Process	10. Attachments Blank = Display the		EV01	Process	10. Attachments Blank = Display the
P4101	ZJDE0001	Process	11. Use Templates Blank = Do not us		EV01	Process	11. Use Templates Blank = Do not us

On the left hand side the newly generated or current Freezeport is shown and on the right hand side the previous generated (selected) Freezeport is shown.

### 3.2.3.3 Color coding

Color coding is applied to easily distinguish between the found differences.

#### Green: Left only

A green colored line indicates that when comparing Freezepoints the occurrence only appears in the Freezepoint on the left hand side.

Object Name	Version	PO Tab Text	PO Text	PO Value	PO Item	Compare Tab Text	Compare Text
P4210	ZJDE0002	Defaults	1. Order Type (Required)	CO	DCTO		
P4210	ZJDE0002	Defaults	2. Line Type	C	LNTY		
P4210	ZJDE0002	Defaults	3. Beginning Status	620	LTTR		
P4210	ZJDE0002	Defaults	4. Override Next Status		NXTR		
P4210	ZJDE0002	Defaults	5. Line Number Increment	10000	LNIX		
P4210	ZJDE0002	Defaults	6. Reason Code		RCD		
P4210	ZJDE0002	Defaults	7. Override Transaction Unit of Meas		UOM		
P4210	ZJDE0002	Defaults	8. Default Transaction Unit of Measur		EV01		
P4210	ZJDE0002	Defaults	9. Address Book Revisions Blank		EV17		
P4210	ZJDE0002	Defaults	10. Update Header to Detail Blank	1	EV18		
P4210	ZJDE0002	Defaults	11. Header Branch/Plant Blank =		EV02		
P4210	ZJDE0002	Defaults	12. Default Branch/Plant		MCU		
P4210	ZJDE0002	Defaults	13. Order Template		ORTP		
P4210	ZJDE0002	Defaults	14. Customer Self Service Structure		OSTP		
P4210	ZJDE0002	Defaults	15. User ID default (CSS only) Bla		EV01		

#### Red: Left and right, different values

A red colored line indicates that in comparing the Freezepoints the occurrence appears in both Freezepoints but having different values.

Object Name	Version	PO Tab Text	PO Text	PO Value	PO Item	Compare Tab Text	Compare Text
P4210	ZJDE0001	Defaults	1. Order Type (Required)	SD	DCTO	Defaults	1. Order Type (Required)
P4210	ZJDE0001	Defaults	2. Line Type	D	LNTY	Defaults	2. Line Type

#### Blue: Right only

A blue colored line indicates that when comparing Freezepoints the occurrence only appears in the Freezepoint on the right hand side.

Object Name	Version	PO Tab Text	PO Text	PO Value	PO Item	Compare Tab Text	Compare Text
P4210	ZJDE0001					Defaults	1. Order Type (Required)
P4210	ZJDE0001					Defaults	2. Line Type
P4210	ZJDE0001					Defaults	3. Beginning Status
P4210	ZJDE0001					Defaults	4. Override Next Status
P4210	ZJDE0001					Defaults	5. Line Number Increment
P4210	ZJDE0001					Defaults	6. Reason Code
P4210	ZJDE0001					Defaults	7. Override Transaction Unit of Meas
P4210	ZJDE0001					Defaults	8. Default Transaction Unit of Measur
P4210	ZJDE0001					Defaults	9. Address Book Revisions Blank
P4210	ZJDE0001					Defaults	10. Update Header to Detail Blank
P4210	ZJDE0001					Defaults	11. Header Branch/Plant Blank =
P4210	ZJDE0001					Defaults	12. Default Branch/Plant
P4210	ZJDE0001					Defaults	13. Order Template
P4210	ZJDE0001					Defaults	14. Customer Self Service Structure
P4210	ZJDE0001					Defaults	15. User ID default (CSS only) Bla

#### Black: Left and right, values are equal

A black colored line indicates that in comparing the Freezepoints the occurrence appears in both Freezepoints having identical values.

Object Name	Version	PO Tab Text	PO Text	PO Value	PO Rem	Compare Tab Text	Compare Text
P4210	ZJDE0001	Defaults	1. Order Type (Required)	80	DCTO	Defaults	1. Order Type (Required)
P4210	ZJDE0001	Defaults	2. Line Type	S	LNTY	Defaults	2. Line Type
P4210	ZJDE0001	Defaults	3. Beginning Status	520	LTTR	Defaults	3. Beginning Status
P4210	ZJDE0001	Defaults	4. Override Next Status		NXTR	Defaults	4. Override Next Status
P4210	ZJDE0001	Defaults	5. Line Number Increment	1000	LNIX	Defaults	5. Line Number Increment
P4210	ZJDE0001	Defaults	6. Reason Code		RCD	Defaults	6. Reason Code
P4210	ZJDE0001	Defaults	7. Override Transaction Unit of Measur		UOM	Defaults	7. Override Transaction Unit of Measur
P4210	ZJDE0001	Defaults	8. Default Transaction Unit of Measure	1	EV01	Defaults	8. Default Transaction Unit of Measure
P4210	ZJDE0001	Defaults	9. Address Book Revisions Blank = M		EV17	Defaults	9. Address Book Revisions Blank = M
P4210	ZJDE0001	Defaults	10. Update Header to Detail Blank =	1	EV18	Defaults	10. Update Header to Detail Blank =
P4210	ZJDE0001	Defaults	11. Header Branch/Plant Blank = bra		EV02	Defaults	11. Header Branch/Plant Blank = bra
P4210	ZJDE0001	Defaults	12. Default Branch/Plant		MCU	Defaults	12. Default Branch/Plant
P4210	ZJDE0001	Defaults	13. Order Template		ORTP	Defaults	13. Order Template
P4210	ZJDE0001	Defaults	14. Customer Self Service Structure Ty		OSTP	Defaults	14. Customer Self Service Structure Ty
P4210	ZJDE0001	Defaults	15. User ID default (CSS only) Blank		EV01	Defaults	15. User ID default (CSS only) Blank

### 3.2.3.4 Rebuilt

The results of a comparison are saved to allow for quick reload of the differences later. Only when one of the Freezepoints involved is changed, the compare will be regenerated when required.

### 3.2.3.5 Differences

In order to get a better overview all compare screens have a "Show differences only" checkbox.

Show differences only (none found)

### 3.2.3.6 Print

A Freezepoint compare can be printed by clicking the print button on the Report Exit bar. A new screen will open where the report destination and the output stream access can be selected.

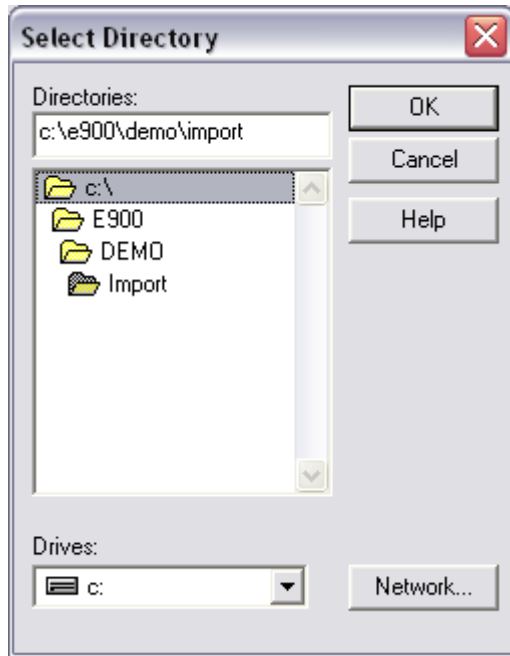
### 3.2.4 Export

A Freezepoint can be exported by clicking the Export button on the Form Exit bar. A new screen with the default path, for saving the export file, will open.

You are about to export Processing Option Freezepoint Default environment DEMO900, click filename to change location.

[C:\E900\DEMO\Export\WW-ExportPOFreezepoint\\_Default\\_DEMO900.txt](C:\E900\DEMO\Export\WW-ExportPOFreezepoint_Default_DEMO900.txt)

Click the OK button in order to export the Freezepoint.

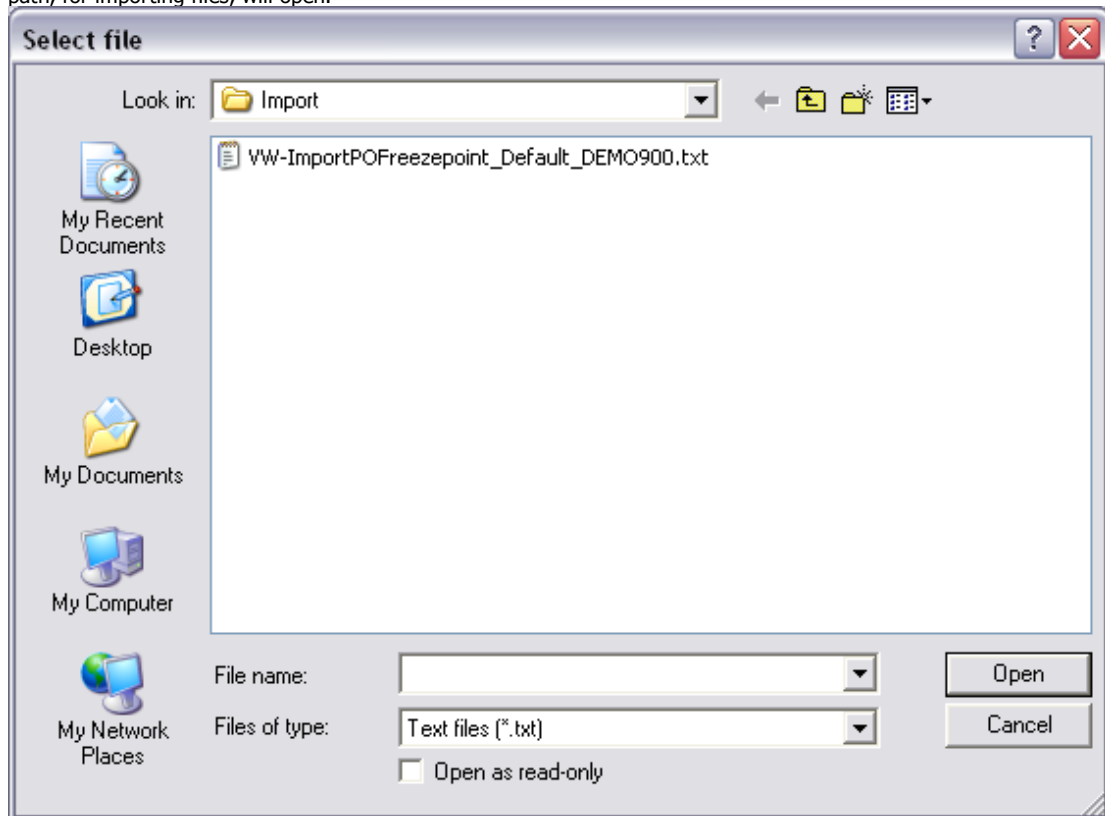


For exporting Freezepoints it is required that the default path already exists.

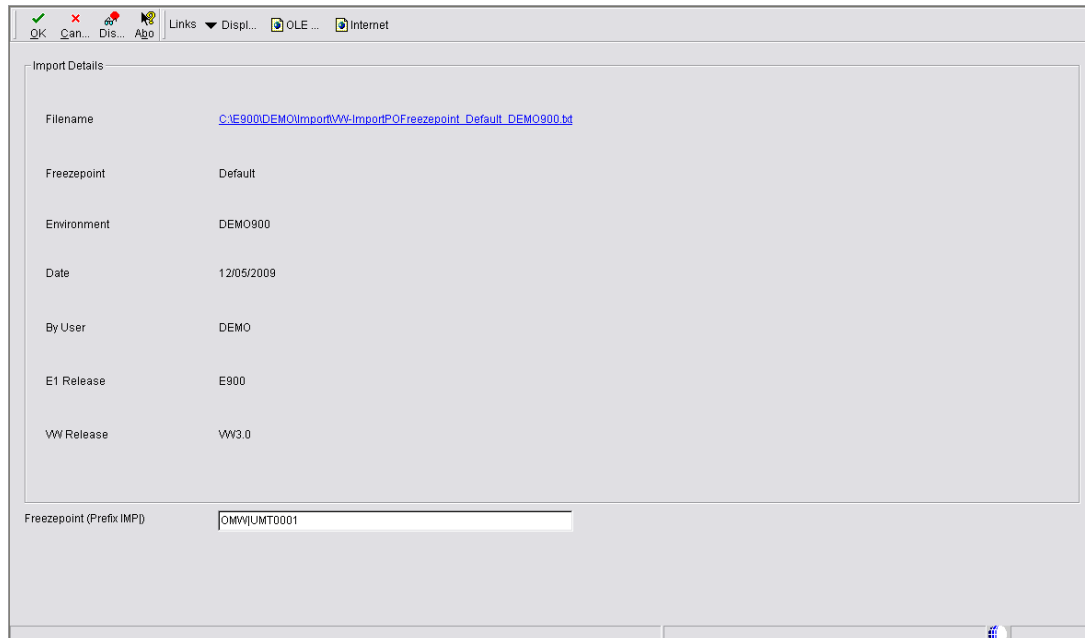
### 3.2.5 Import

See also: Imported

A Freezepoint can be imported by clicking the Import button on the Form Exit bar. A new screen with the default path, for importing files, will open.

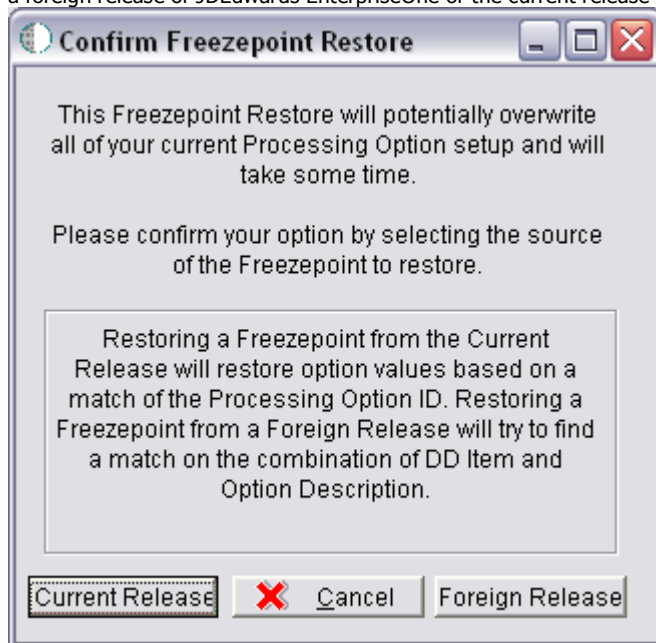


Select the Freezepoint to import and Click open. Again a new screen will open with relevant information about the Freezepoint for validation if the correct Freezepoint is selected. Together with the relevant Freezepoint information the Freezepoint (Prefix IMP|) record must be selected for saving the imported Freezepoint.

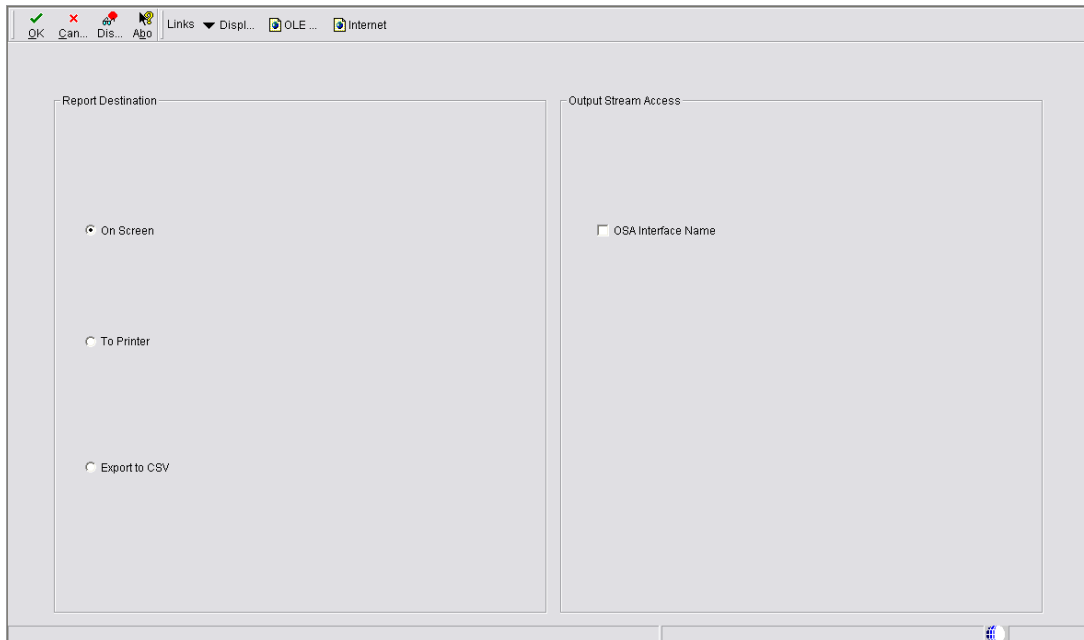


### 3.2.6 Restore

By clicking the Restore Proof or Restore Final button on the Form Exit bar a Freezepoint can be restored from either a foreign release of JDEdwards EnterpriseOne or the current release of JDEdwards EnterpriseOne.



In order to safeguard the result of a restored Freezepoint one can run a Freezepoint restore in proof and final mode. The output can be either shown on screen, printed or exported as csv file.



### 3.2.6.1 Foreign

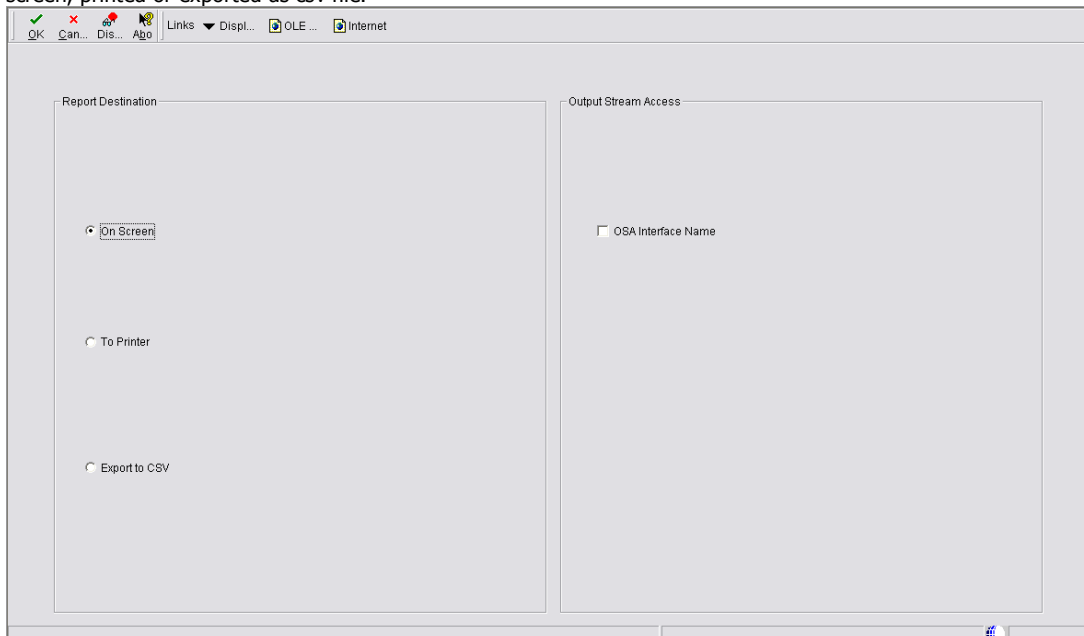
Restoring a Freezepoint from a foreign release will try to find a match for the Processing Option ID based on a combination of the Data Dictionary item and Option description.

### 3.2.6.2 Current

Restoring a Freezepoint from the current release will restore Processing Option values based on the a match of the Processing Option ID.

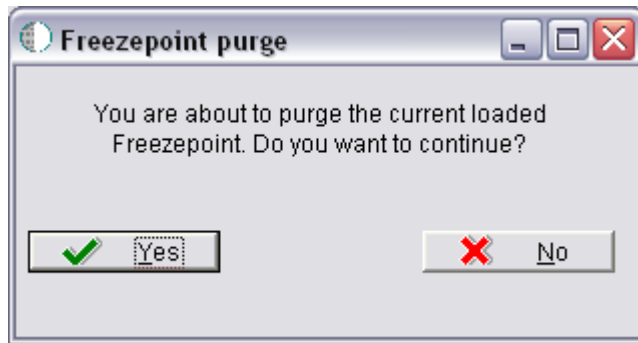
## 3.2.7 Report

A Freezepoint can be printed by clicking the Print button on the Report Exit bar. The output can be either shown on screen, printed or exported as csv file.



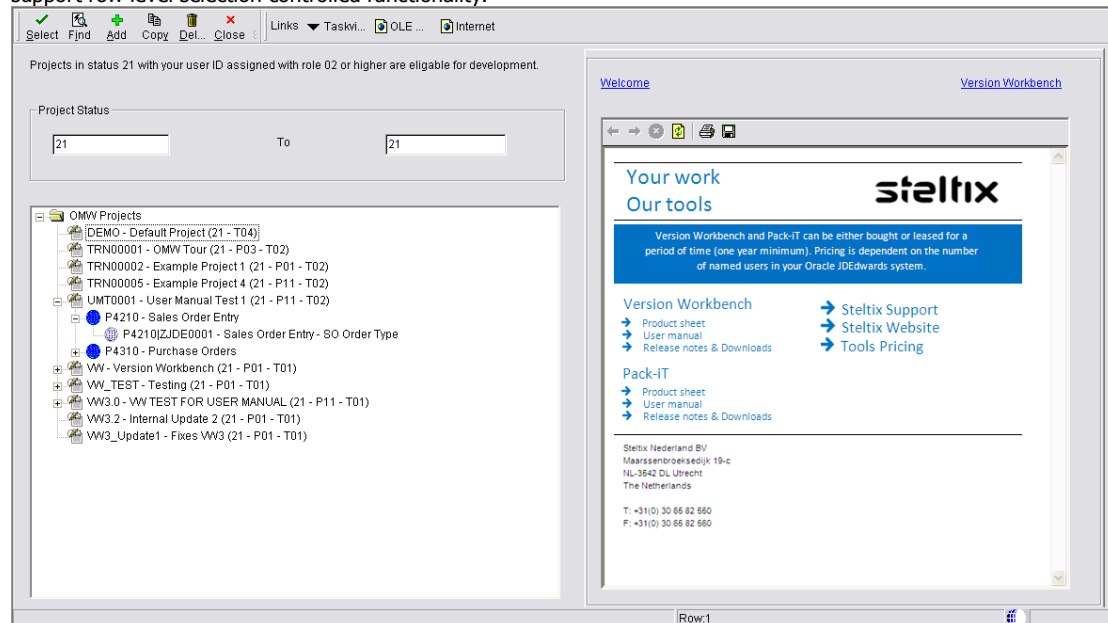
## 3.2.8 Delete

By clicking the Purge button on the Form Exit bar the current Freezepoint can be deleted.



## 4. Version Management

The OMW project tree control in the main Version Workbench screen presents versions in the following hierarchy to support row level selection controlled functionality.



- Project
  - Object (P or R)
  - Version

### 4.1 Project Maintenance

The Project Maintenance button on the Row Exit in Version Workbench 2.5 is in Version Workbench 3.0 integrated in the Add, Copy, Delete and Versions buttons on the Row Exit bar.

### 4.2 Mass Copy

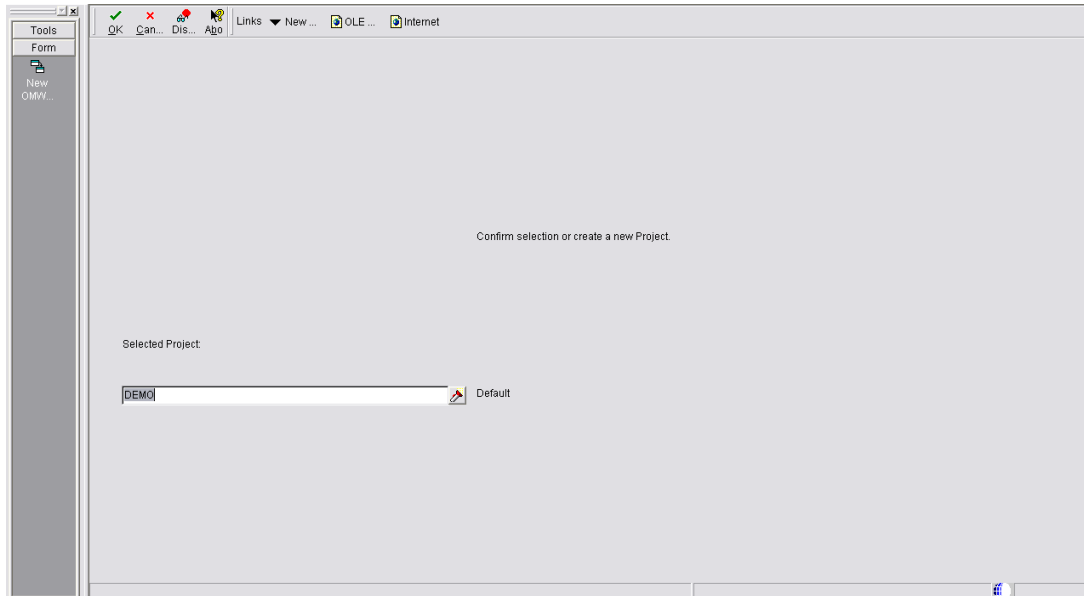
See also: Copy

The Mass Version Copy application of the Version Workbench can be used to copy multiple versions based on a version prefix selection to a new version prefix. The newly created versions will be available in an OMW project and the batch versions will be checked out.

To access the Mass Version Copy application choose the Mass Version Copy button from the Form Exit bar from the main Version Workbench screen.

#### 4.2.1 Project

When clicking the Copy button when no project is selected in the Version Workbench main screen a screen will open where a project can be selected or a new project can be created.



### 4.2.1.1 Any length or different length

### 4.2.1.2 Max length evaluated and errors skipped

### 4.2.1.3 Only allow new unique version refs

## 4.2.2 Criteria

The range of Object(s) can be defined and the version prefix and new version prefix must be entered.

Add copied versions to project: VW3.0 - VW TEST FOR USER MANUAL

Object From:  To:   BV  IV

Version Prefix:  New Prefix:

When the range and the version prefix are defined the objects meeting the criteria are displayed.

Add copied versions to project: VW3.0 - VW TEST FOR USER MANUAL

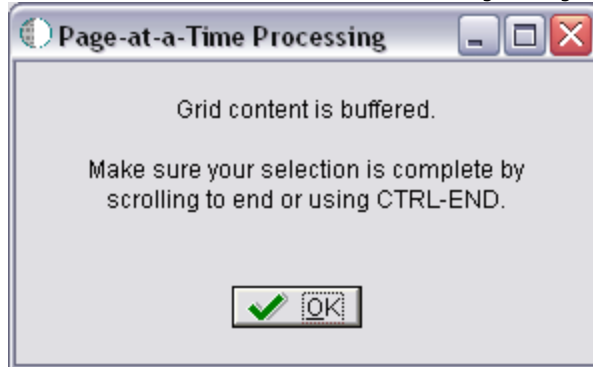
Object From:  To:   BV  IV

Version Prefix:  New Prefix:

Object	Version	Description
P4310	ZJDE0001	Order Entry - Inventory
P4310	ZJDE0002	Order Entry - Bid
P4310	ZJDE0003	Order Entry - Requisition
P4310	ZJDE0004	Order Entry - Encumbrance
P4310	ZJDE0005	Order Entry - Non Stock
P4310	ZJDE0006	Order Entry - Blanket
P4310	ZJDE0007	Order Entry - Non Stock Blanket
P4310	ZJDE0008	Order Entry - Order Revisions
P4310	ZJDE0009	Order Entry - Non Stock Requisition
P4310	ZJDE0010	Order Entry - Non Stock Order Revisions
P4310	ZJDE0011	Order Entry - Plant Maintenance
P4310	ZJDE0012	Order Entry - Non Stock Bid
P4310	ZJDE0013	Order Entry - Open Order Inquiry
P4310	ZJDE0014	Return Material Authorization - CSMS
P4310	ZJDE0015	Order Entry - Subcontracts
P4310	ZJDE0016	Order Entry - Requisition / Subcontracts
P4310	ZJDE0017	Order Entry - Quotes / Subcontracts

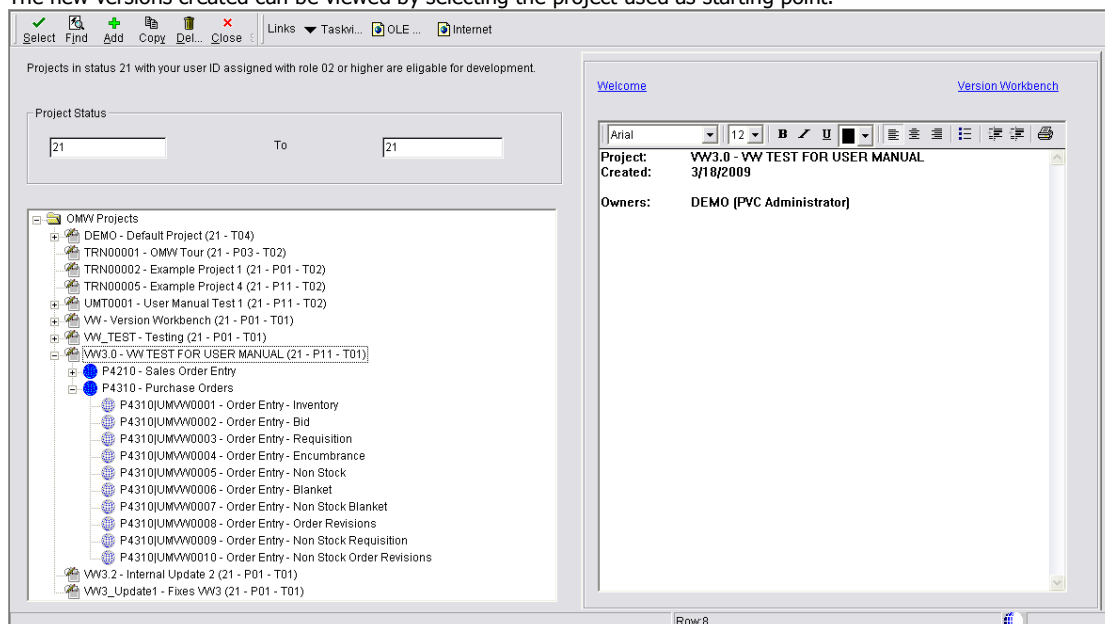
## 4.2.3 Selection

The records meeting the defined criteria can be selected by row or all records can be selected at once. When using the select all button on the Form Exit bar a warning message will pop up indicating that the Grid content is buffered.



After selection of the objects the mass copy can be completed by using the Copy Selected button on the Form Exit bar.

The new versions created can be viewed by selecting the project used as starting point.

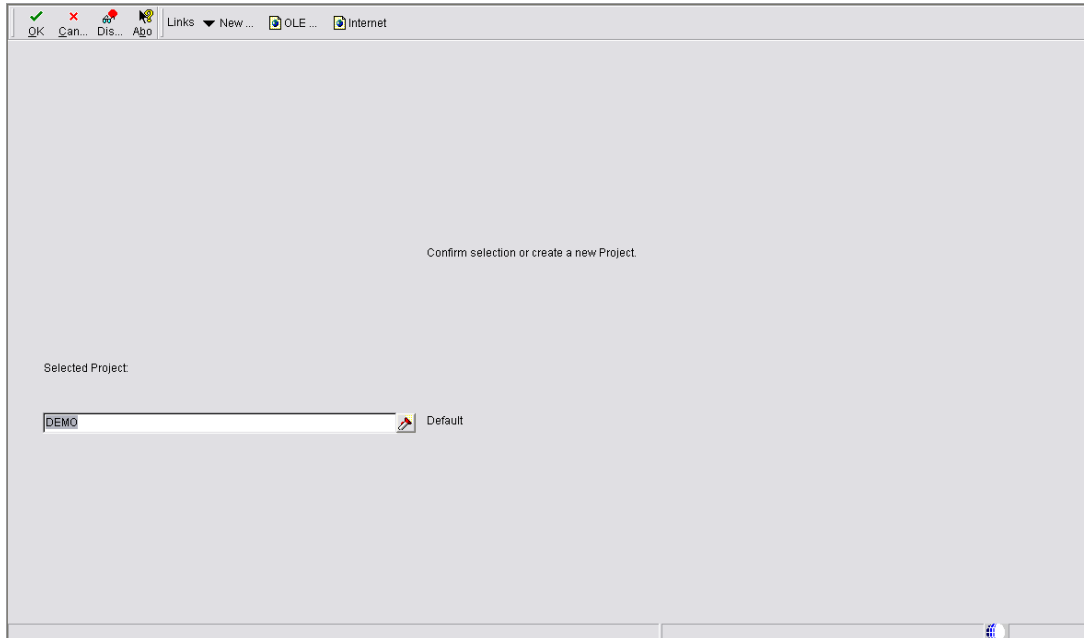


## 4.3 Mass Create

The Mass Version Create application of the Version Workbench can be used to create multiple versions. The newly created versions will be available in an OMW project and the batch versions will be checked out.

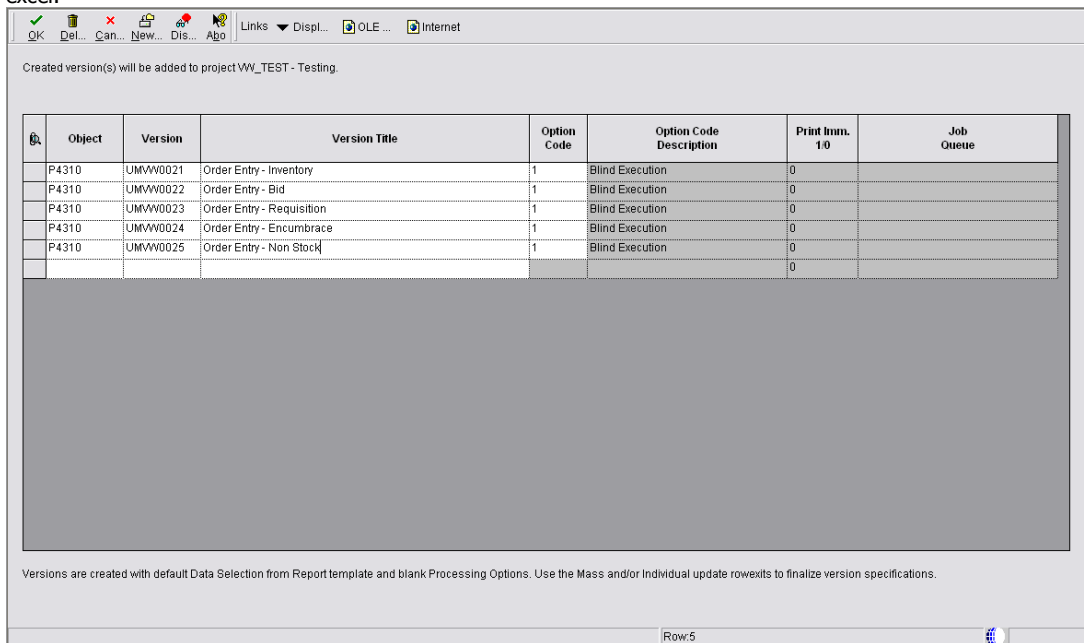
### 4.3.1 Project

When clicking the Add button when no project is selected in the Version Workbench main screen a screen will open where a project can be selected or a new project can be created.

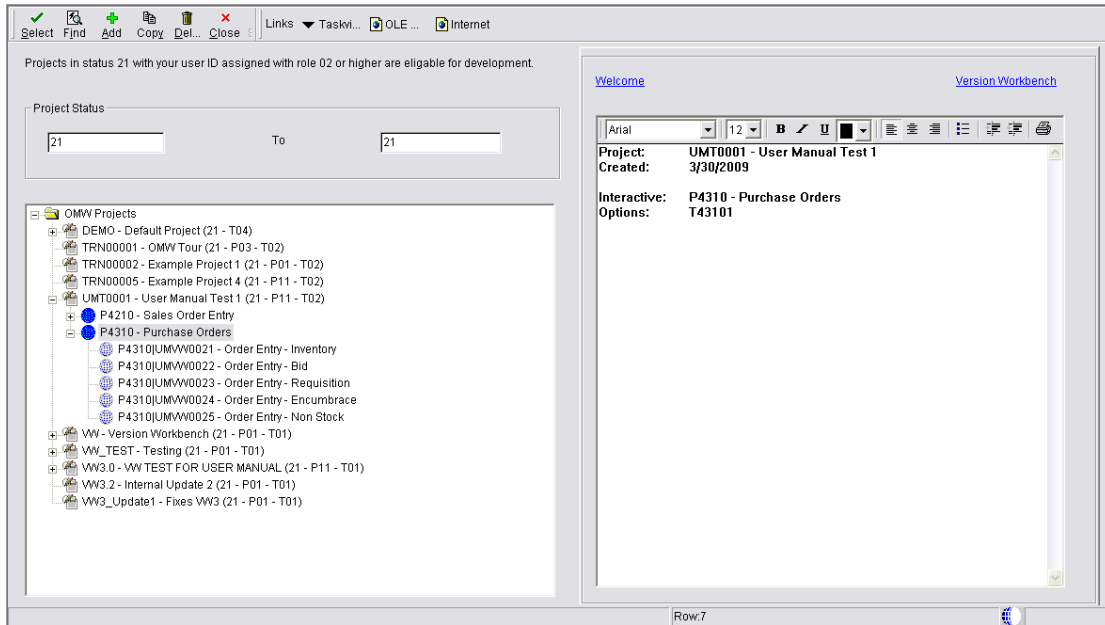


### 4.3.2 Create

Versions can be either manually created by entering the object, version and version title in the grid or imported from excel.

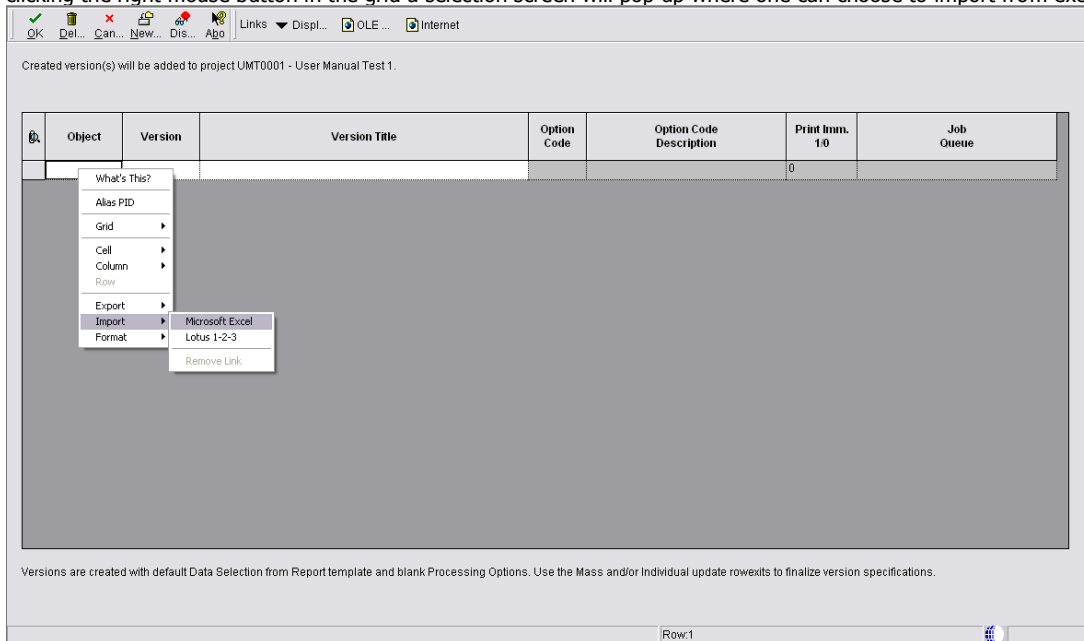


After creation of the objects the mass creation can be completed by clicking the Ok button. The new versions created can be viewed by selecting the project used as starting point.

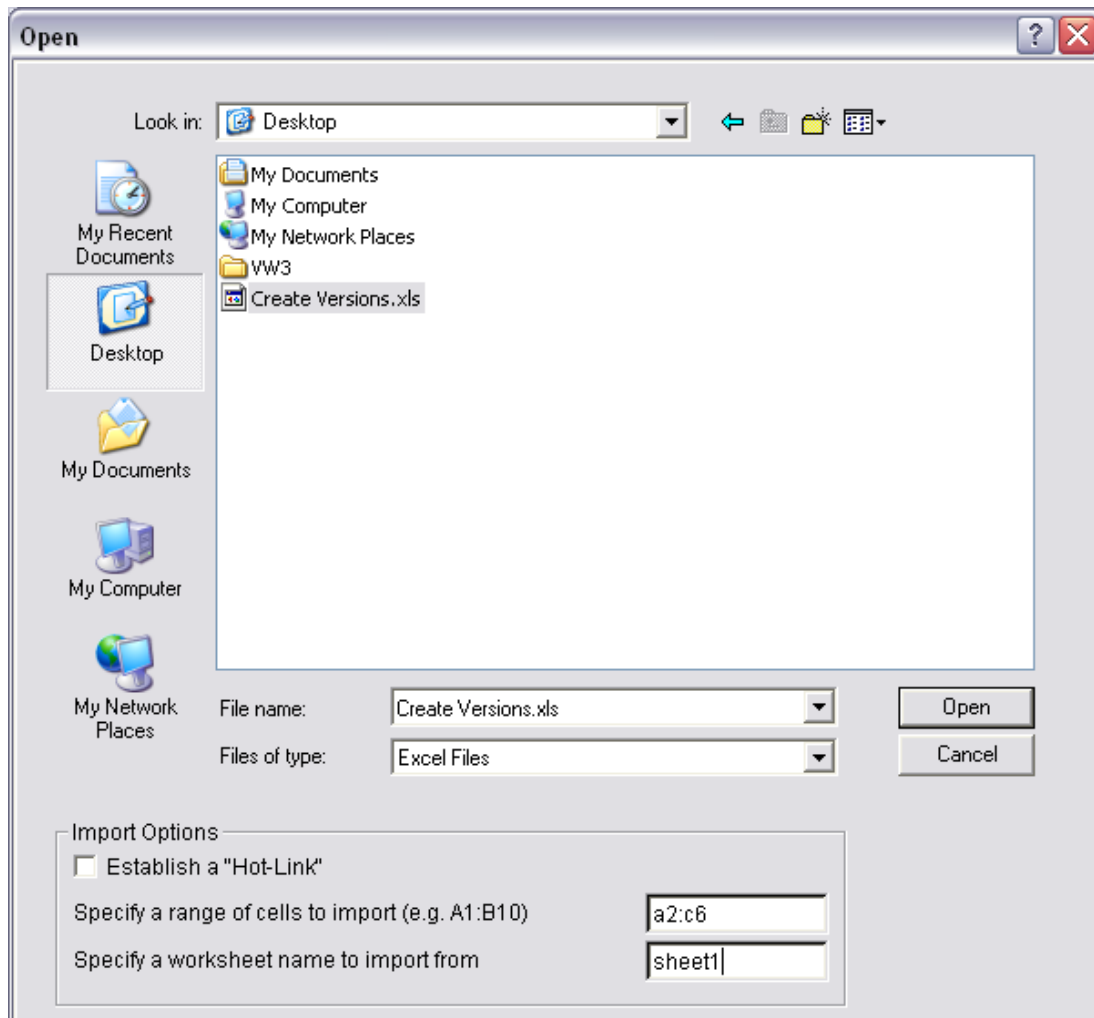


### 4.3.2.1 Import from Excel

When importing versions from excel make sure the grid in excel is identical to the grid in Version Workbench. When clicking the right mouse button in the grid a selection screen will pop up where one can choose to import from excel.



When selecting the excel file also the sheet and the range of cells needs to be entered.



### 4.3.3 Processing Options

See also: Processing Options

The processing options of the newly created interactive and batch versions are empty.

**Processing Options**

Defaults | Display | Interfaces | Processing | Duplication | Cross Ref | Order Inquiry

1. Order Type
2. Line Type
3. Beginning Status
4. Override Next Status
5. Unit of Measure
6. Line Number Increment
7. Default Tax Rate/Area  
Blank = Supplier  
1 = Ship To
8. Transaction Unit of Measure  
Blank = Purchasing Unit of Measure  
1 = Primary Unit of Measure
9. Landed Cost Rule
10. Header to Detail  
Blank = Manually load header changes to detail  
1 = Auto load header changes to detail
11. Work Order Status

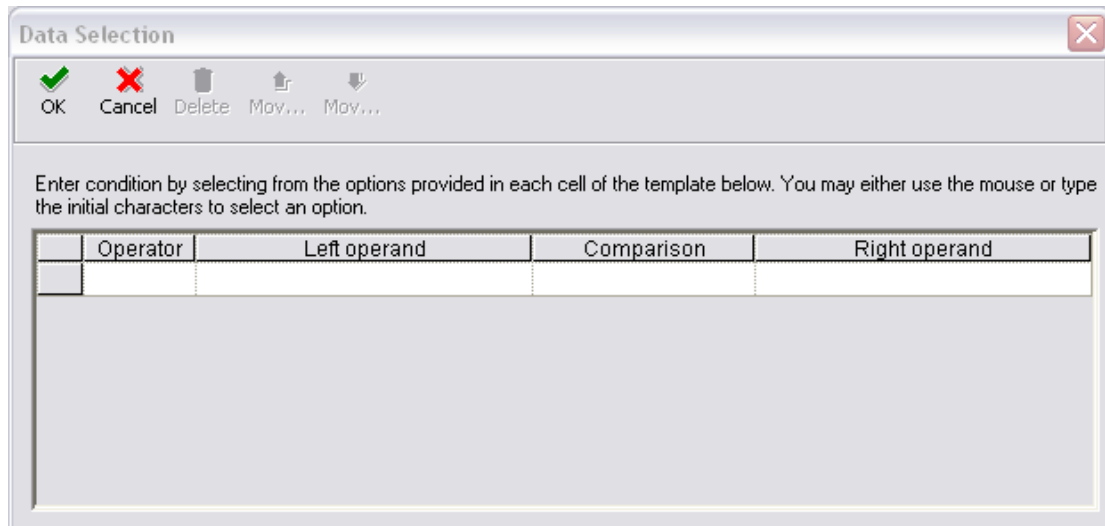
OK Help Cancel

Use the mass and/or individual row exits to finalize version specifications.

## 4.3.4 Data Selection

See also: Data Selections

The data selection of the newly created batch versions are empty.



Use the mass and/or individual row exits to finalize version specifications.

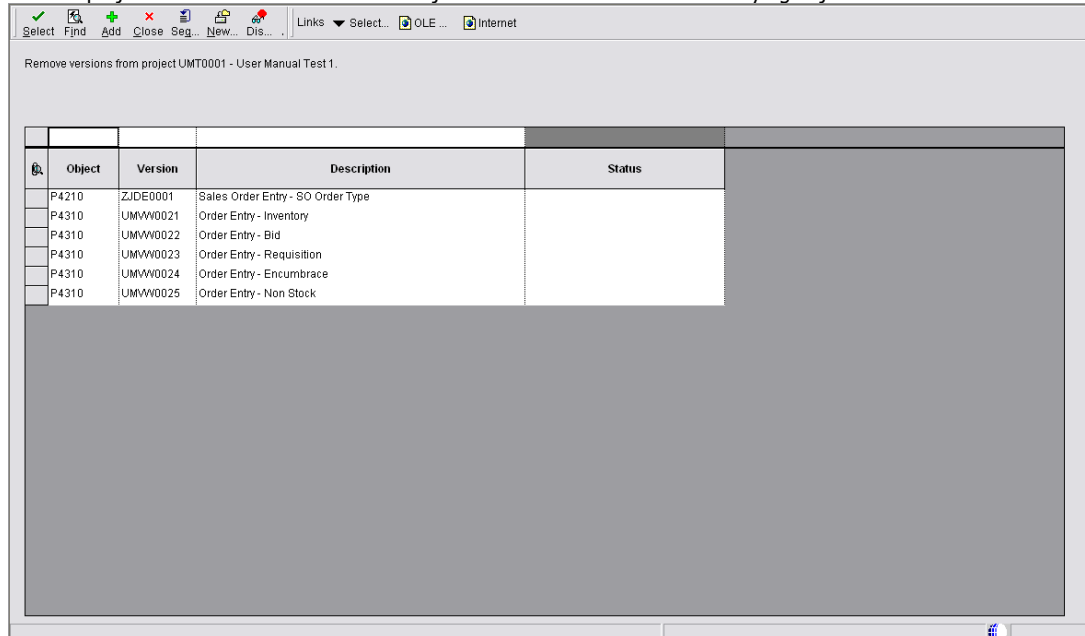
## 4.4 Mass Remove/Delete

The Mass Version Remove/Delete application of the Version Workbench can be used to remove/delete multiple versions. The versions can be either removed/deleted from all locations, per OMW project or from an object in an OMW project.

### 4.4.1 Remove

By clicking the Versions button from the Row Exit bar in the main Version Workbench screen will give access to the Work with Project Version screen.

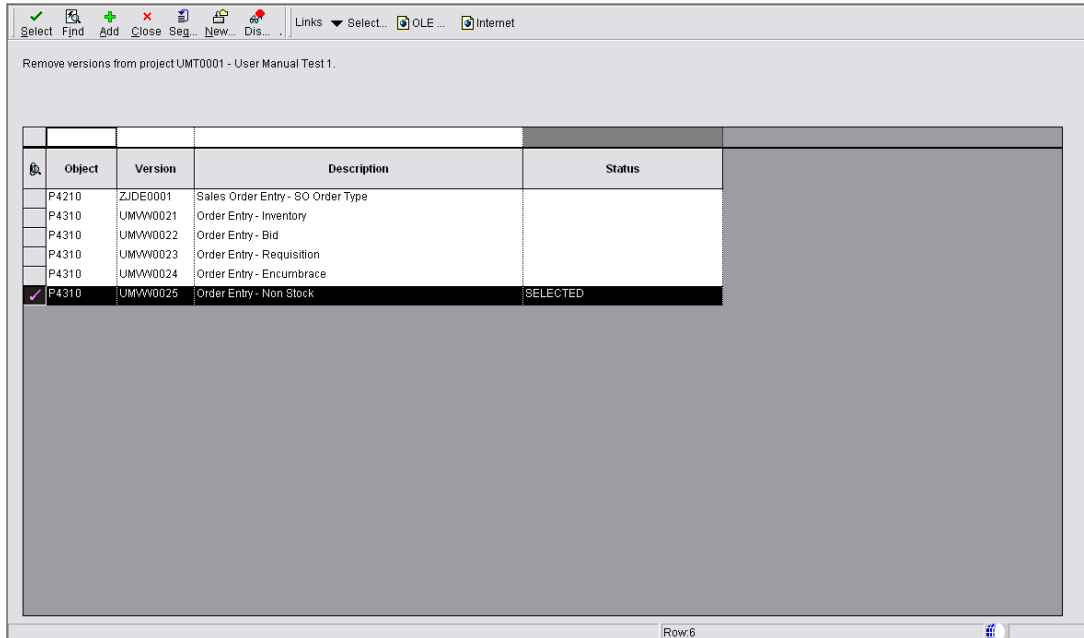
When a project is selected the Work with Project Version screen with all underlying objects and its versions is loaded.



When an object is selected the Work with Project Version screen with all underlying versions is loaded.

When a version is selected the Work with Project Version screen with the specific version is loaded.

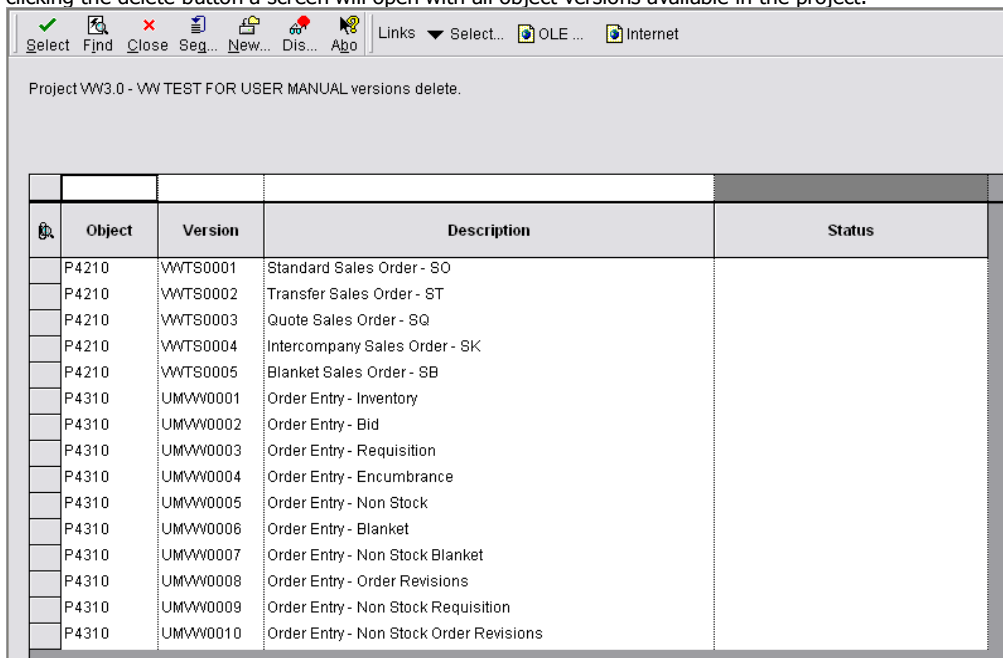
The versions to remove can be either selected per row or using the Select All button from the Form Exit bar.



By clicking the Remove Selected button from the Form Exit bar the version(s) will be removed.

## 4.4.2 Delete

Select in the main Version Workbench screen the OMW project from which to delete the specific versions. When clicking the delete button a screen will open with all object versions available in the project.



The versions to delete can be either selected per row or using the Select All button from the Form Exit bar.

Object	Version	Description	Status
P4210	WVTS0001	Standard Sales Order - SO	
P4210	WVTS0002	Transfer Sales Order - ST	
P4210	WVTS0003	Quote Sales Order - SQ	
✓ P4210	WVTS0004	Intercompany Sales Order - SK	SELECTED
✓ P4210	WVTS0005	Blanket Sales Order - SB	SELECTED
P4310	UMVW0001	Order Entry - Inventory	
P4310	UMVW0002	Order Entry - Bid	
P4310	UMVW0003	Order Entry - Requisition	
P4310	UMVW0004	Order Entry - Encumbrance	
P4310	UMVW0005	Order Entry - Non Stock	
✓ P4310	UMVW0006	Order Entry - Blanket	SELECTED
✓ P4310	UMVW0007	Order Entry - Non Stock Blanket	SELECTED
✓ P4310	UMVW0008	Order Entry - Order Revisions	SELECTED
✓ P4310	UMVW0009	Order Entry - Non Stock Requisition	SELECTED
✓ P4310	UMVW0010	Order Entry - Non Stock Order Revisions	SELECTED

By clicking the Delete Selected button from the Form Exit bar the version(s) will be deleted.

## 4.5 Mass Updates

The mass update applications of the Version Workbench can be used to change option values on multiple versions of interactive and/or batch programs, literal data selection values on multiple versions of batch programs and security of multiple interactive and/or batch programs.

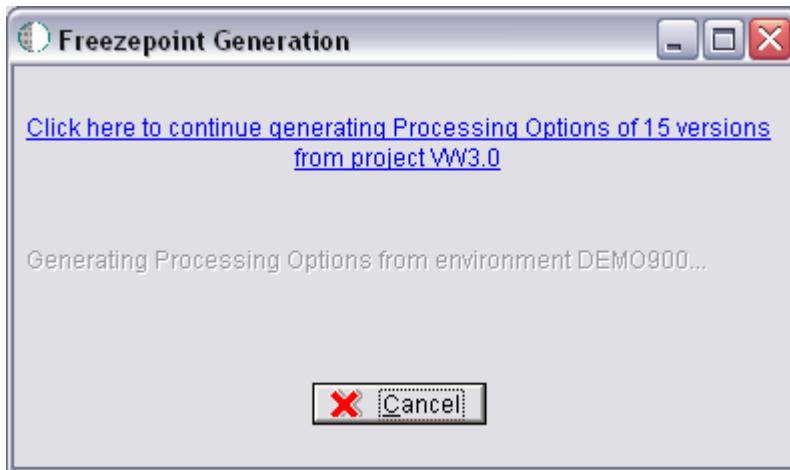
### 4.5.1 Processing Options

See also: Processing Options

The Processing Option Mass Update application of the Version Workbench can be used to change option values on multiple versions of interactive and/or batch programs.

By selecting the project and clicking the Processing Options button on the Row Exit bar a Freezepoint will be generated of all object versions in the project, while by selecting a specific object a Freezepoint of the underlying versions will be generated.

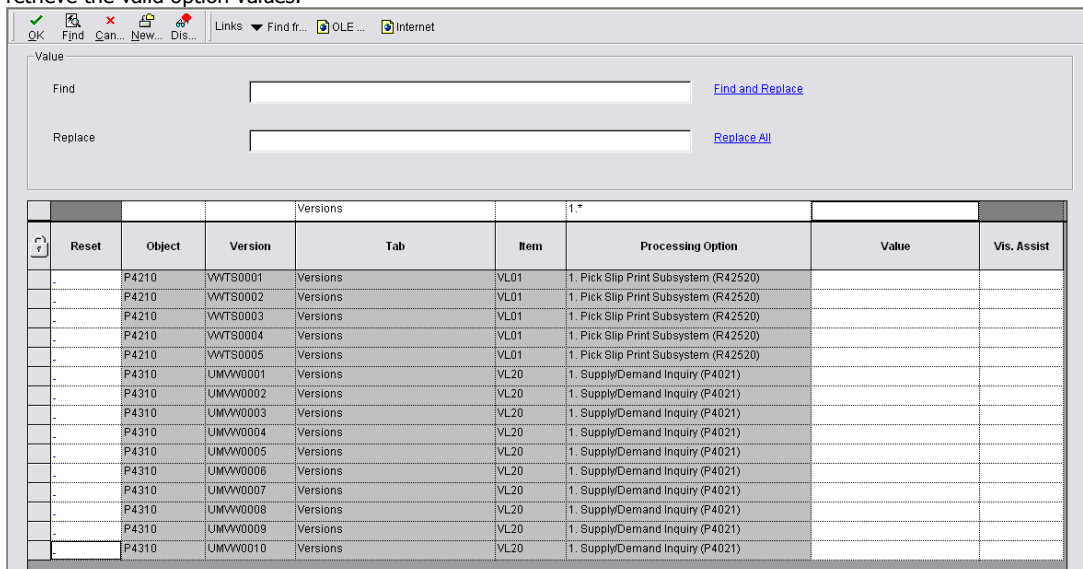
By clicking the link the processing options for all the selected versions will be generated.



Note: Before clicking the find button, use appropriate filtering. The screen will load all versions that satisfy the query selection and will not load them "page-at-a-time".

### 4.5.1.1 Manual Entry

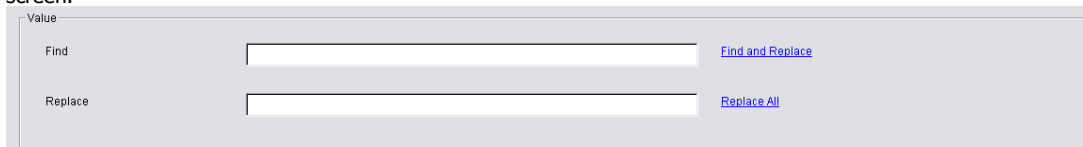
Option values can be changed by manually entering the values in the grid. An option change can be undone by clicking in the Reset column. This will return the option value to its previous state. The most right column is clickable and functions for the different Visual Assist Forms that can be used to retrieve the valid option values.



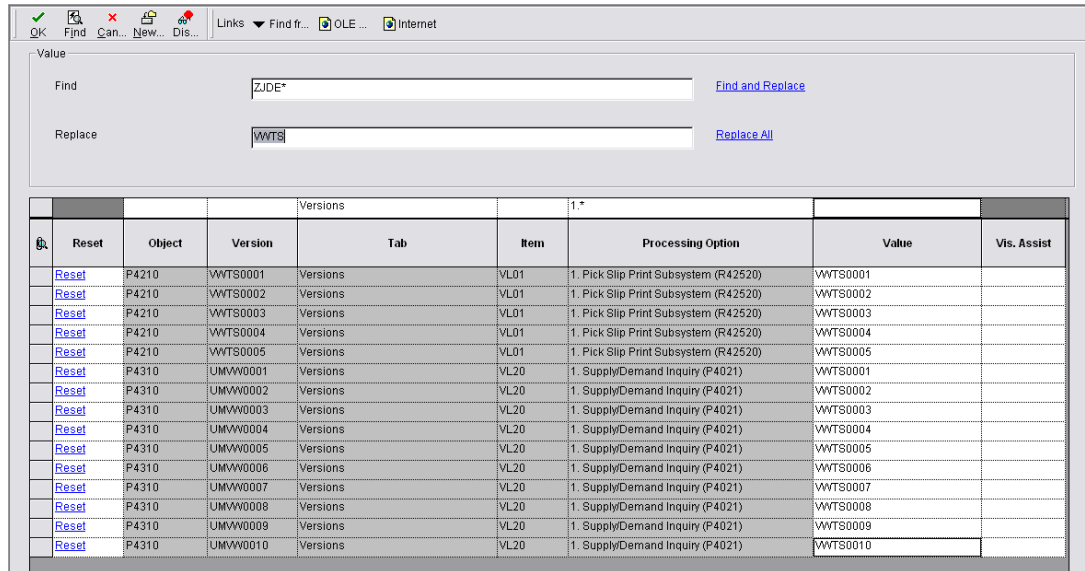
Clicking the Find button will reset all changes made in the grid. Only when the OK button is clicked the changed option values in the grid will be applied in the versions.

### 4.5.1.2 Find / Replace

Option values can also be changed by using the "Find and Replace" and "Replace All" controls at the top of the screen.



Use wildcards in the "Find" field to change parts of the processing options to another value. This way, it is possible to change all version references from ZJDE\* to something else in one go.

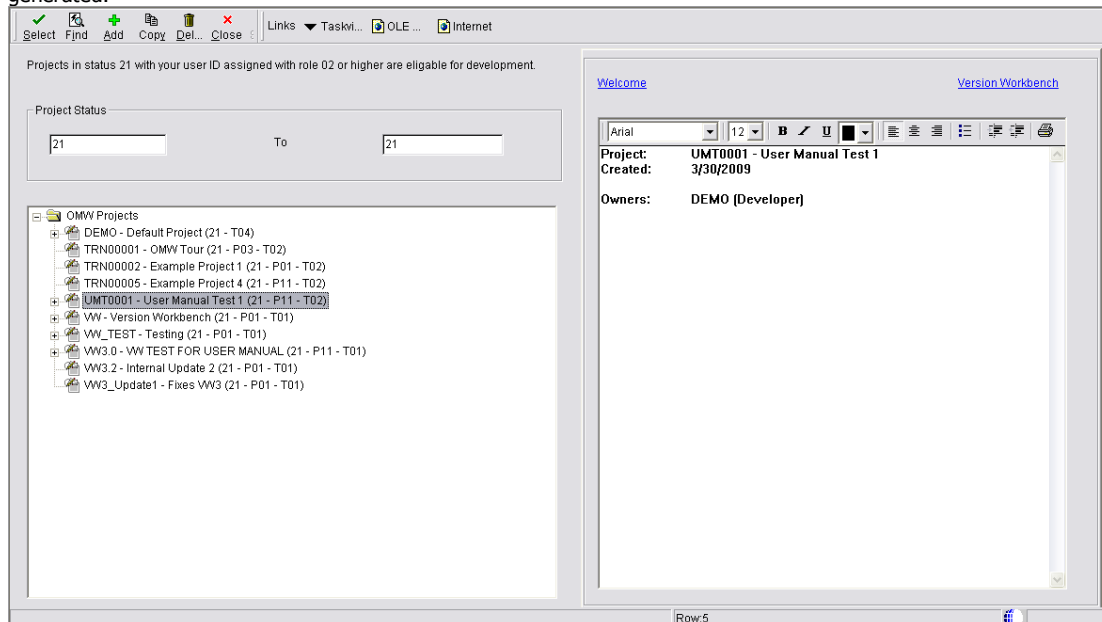


## 4.5.2 Data Selections

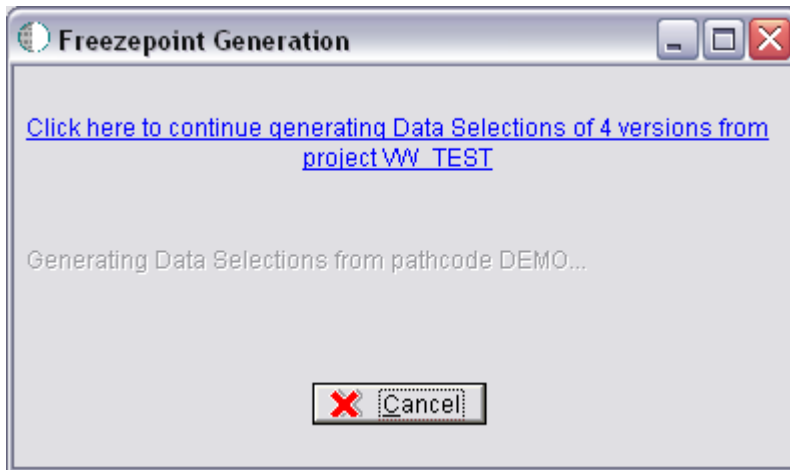
See also: Data Selection

The Data Selection Mass Update application of the Version Workbench can be used to change literal data selection values on multiple versions of batch programs.

By selecting the project and clicking the Data Selection button on the Row Exit bar a Freezepoint will be generated of all object versions in the project, while by selecting a specific object a Freezepoint of the underlying versions will be generated.



By clicking the link the processing options for all the selected versions will be generated.

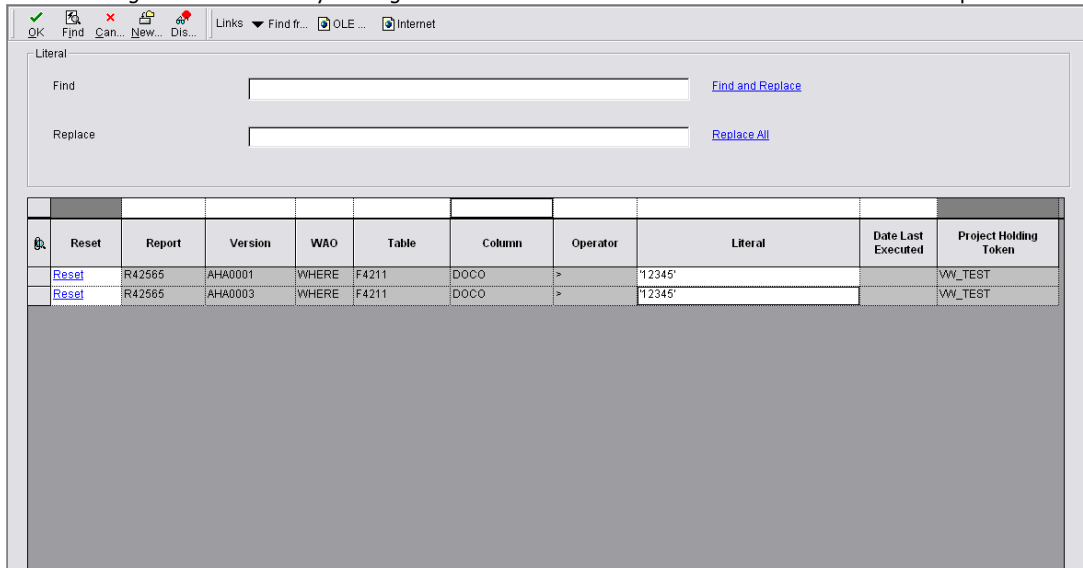


Note: Before clicking the find button, use appropriate filtering. The screen will load all versions that satisfy the query selection and will not load them "page-at-a-time".

## 4.5.2.1 Manual Entry

Literal values can be changed by manually entering the values in the grid.

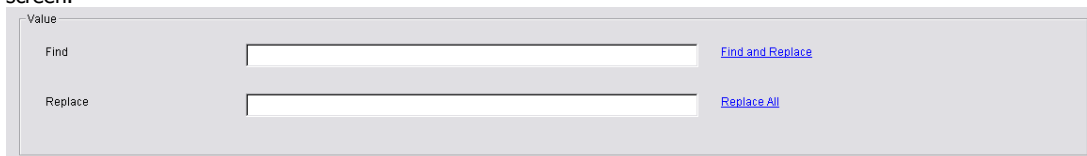
A literal change can be undone by clicking in the Reset column. This will return the literal value to its previous state.



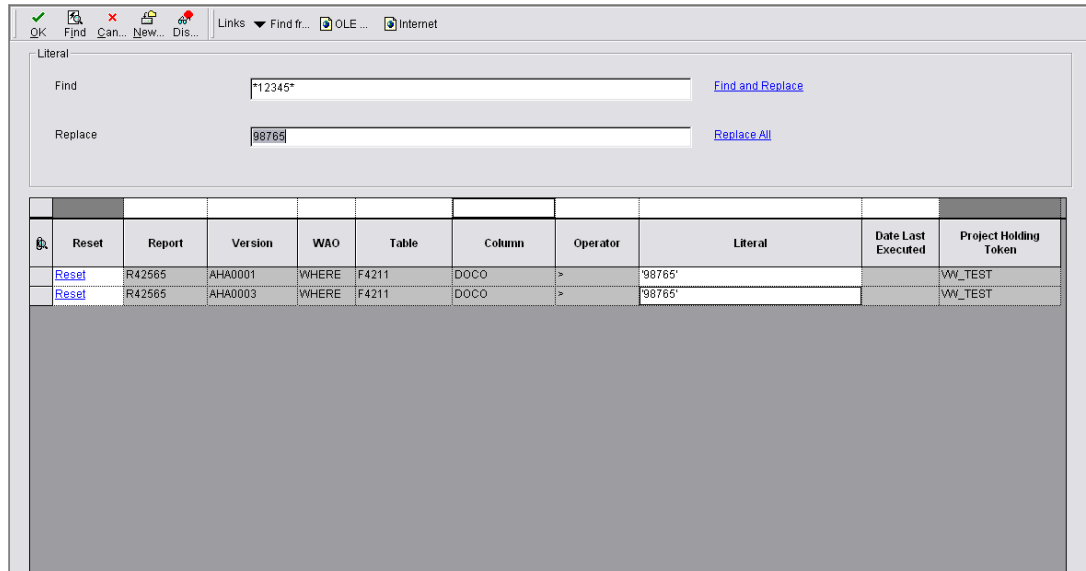
Clicking the Find button will reset all changes made in the grid. Only when the OK button is clicked the changed literal values in the grid will be applied in the versions.

## 4.5.2.2 Find / Replace

Literal values can also be changed by using the "Find and Replace" and "Replace All" controls at the top of the screen.

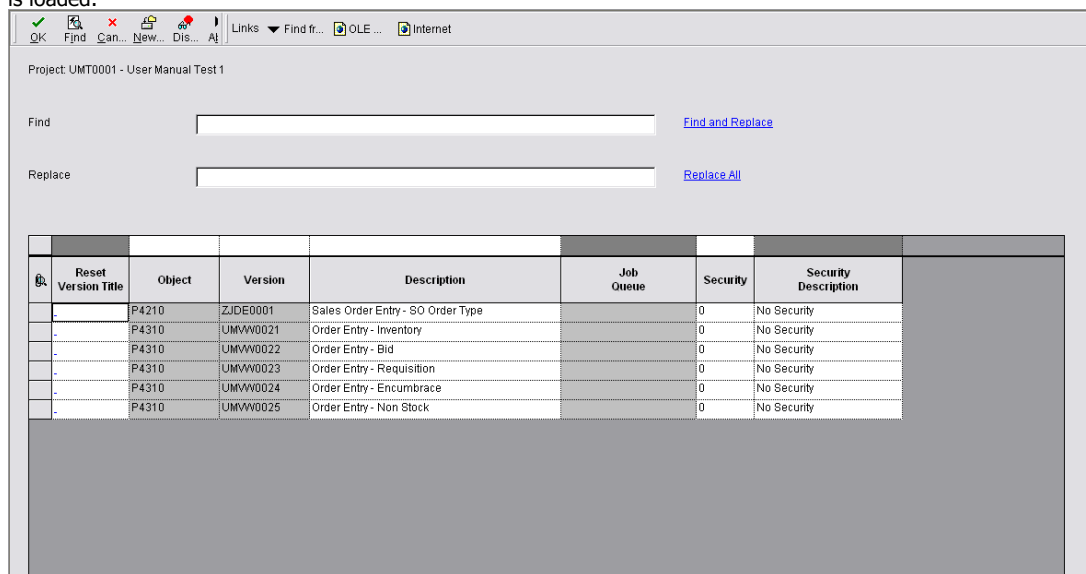


Use wildcards in the "Find" field to change parts of the literal value to another value.



### 4.5.3 Version Revision

By clicking the Select button in the main Version Workbench screen will give access to the Version Revision screens. When a project or an object is selected the mass Version Revision screen with all underlying objects and its versions is loaded.



When an object is selected the Program ID column is hidden and the template description is displayed underneath the project description on the screen header. The Job Queue column is disabled for interactive versions and for batch versions that are not checked out. The Security column will also be disabled for batch versions that are not checked out.

When a version is selected the single Version Revision screen is loaded.

Interactive: [P4310] Purchase Orders

Version: [JMWV0021] **Order Entry - Inventory**

Security: [0] No Security

The Security and Job Queue fields will be disabled if the selected version is not checked out. If an interactive version is selected, the Job Queue field is hidden.

Three things can be maintained through version revision: Descriptions, Security settings and the Job Queue (only for interactive versions).

### 4.5.3.1 Description

Descriptions can be changed by using the "Find and Replace" or "Replace All" controls at the top of the screen.

Project: WW\_TEST - Testing, Batch: R42565 - Print Invoices

Find: [ ] [Find and Replace](#)

Replace: [ ] [Replace All](#)

Reset Version Title	Version	Description	Job Queue	Security	Security Description
-	AHA0001	Print Invoice		0	No Security
-	AHA0002	Print Invoice in Subsystem		0	No Security
-	AHA0003	Print Invoice Proofs		0	No Security
-	AHA0004	Print Invoice - Prepayment		0	No Security

Row: 4

Use wildcards in the "Find" field to change parts of the description to another value.

Project: WW\_TEST - Testing, Batch: R42565 - Print Invoices

Find:  [Find and Replace](#)

Replace:  [Replace All](#)

Reset	Version Title	Version	Description	Job Queue	Security	Security Description
<a href="#">Reset</a>	AHA0001		Copy Invoice		0	No Security
<a href="#">Reset</a>	AHA0002		Copy Invoice in Subsystem		0	No Security
<a href="#">Reset</a>	AHA0003		Copy Invoice Proofs		0	No Security
<a href="#">Reset</a>	AHA0004		Copy Invoice - Prepayment		0	No Security

Row:4

The effect of using the Replace all button is that the entire description will be overwritten.

Project: WW\_TEST - Testing, Batch: R42565 - Print Invoices

Find:  [Find and Replace](#)

Replace:  [Replace All](#)

Reset	Version Title	Version	Description	Job Queue	Security	Security Description
<a href="#">Reset</a>	AHA0001		Copy		0	No Security
<a href="#">Reset</a>	AHA0002		Copy		0	No Security
<a href="#">Reset</a>	AHA0003		Copy		0	No Security
<a href="#">Reset</a>	AHA0004		Copy		0	No Security

Row:4

A change can be undone by clicking in the Reset column. This will return the literal value to its previous state.

### 4.5.3.2 Job Queue

The Job Queue can be changed by clicking in the Job Queue cell of the specific version.

Project: WW\_TEST - Testing, Batch: R42565 - Print Invoices

Find:  [Find and Replace](#)

Replace:  [Replace All](#)

Reset Version Title	Version	Description	Job Queue	Security	Security Description
-	AHA0001	Print Invoice		0	No Security
-	AHA0002	Print Invoice in Subsystem		0	No Security
-	AHA0003	Print Invoice Proofs		0	No Security
-	AHA0004	Print Invoice - Prepayment		0	No Security

Row:1

Accordingly click the Visual Assist and select the Job Queue or enter the Job Queue to be used.

Project: WW\_TEST - Testing, Batch: R42565 - Print Invoices

Find:  [Find and Replace](#)

Replace:  [Replace All](#)

Reset Version Title	Version	Description	Job Queue	Security	Security Description
-	AHA0001	Print Invoice	QBATCH	0	No Security
-	AHA0002	Print Invoice in Subsystem		0	No Security
-	AHA0003	Print Invoice Proofs		0	No Security
-	AHA0004	Print Invoice - Prepayment		0	No Security

Row:1

### 4.5.3.3 Security

The security of specific versions can be changed by clicking in the security cell of the specific version.

Project: WW\_TEST - Testing, Batch: R42565 - Print Invoices

Find  [Find and Replace](#)

Replace  [Replace All](#)

Reset Version Title	Version	Description	Job Queue	Security	Security Description
-	AHA0001	Print Invoice		0	No Security
-	AHA0002	Print Invoice in Subsystem		0	No Security
-	AHA0003	Print Invoice Proofs		0	No Security
-	AHA0004	Print Invoice - Prepayment		0	No Security

Row:1

Accordingly click the Visual Assist and select the Security Level or enter the Security Level number to be used.

Project: WW\_TEST - Testing, Batch: R42565 - Print Invoices

Find  [Find and Replace](#)

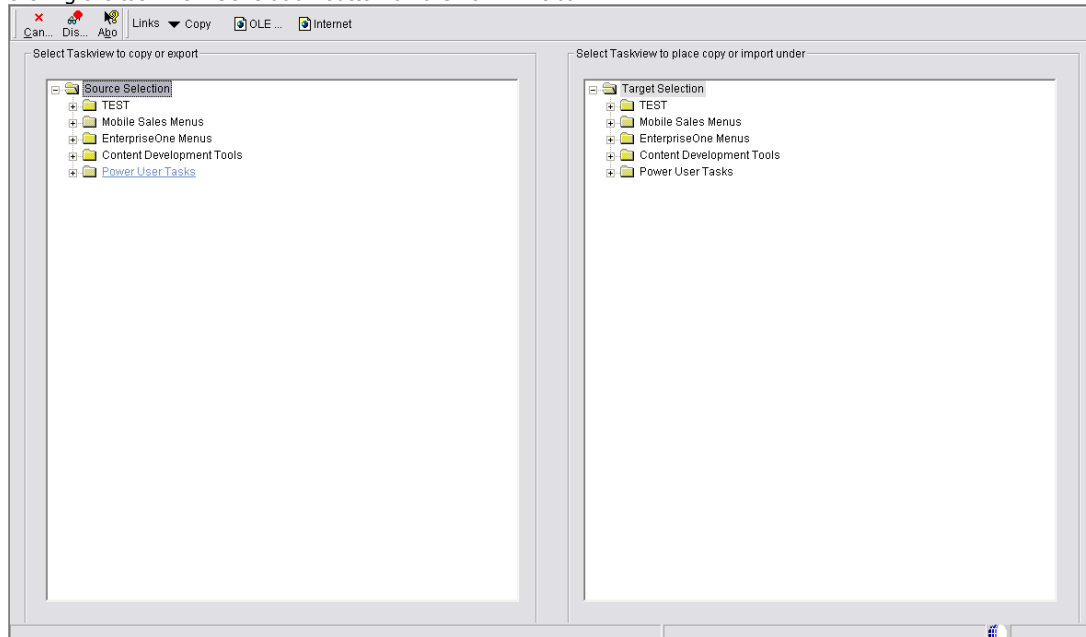
Replace  [Replace All](#)

Reset Version Title	Version	Description	Job Queue	Security	Security Description
-	AHA0001	Print Invoice		8	Full Security
-	AHA0002	Print Invoice in Subsystem		0	No Security
-	AHA0003	Print Invoice Proofs		0	No Security
-	AHA0004	Print Invoice - Prepayment		0	No Security

Row:1

## 5. Task View Maintenance

The Task View Maintenance application (PVW98100) is accessible from the main Version Workbench screen by clicking the task view Generation button on the Form Exit bar.



The application allows the user to copy parts of task views to new task views or new branches in existing task views. Both the task and task relationships (in F9000 and F9001) are created to present the new menu. Role assignments are not copied to the new task view.

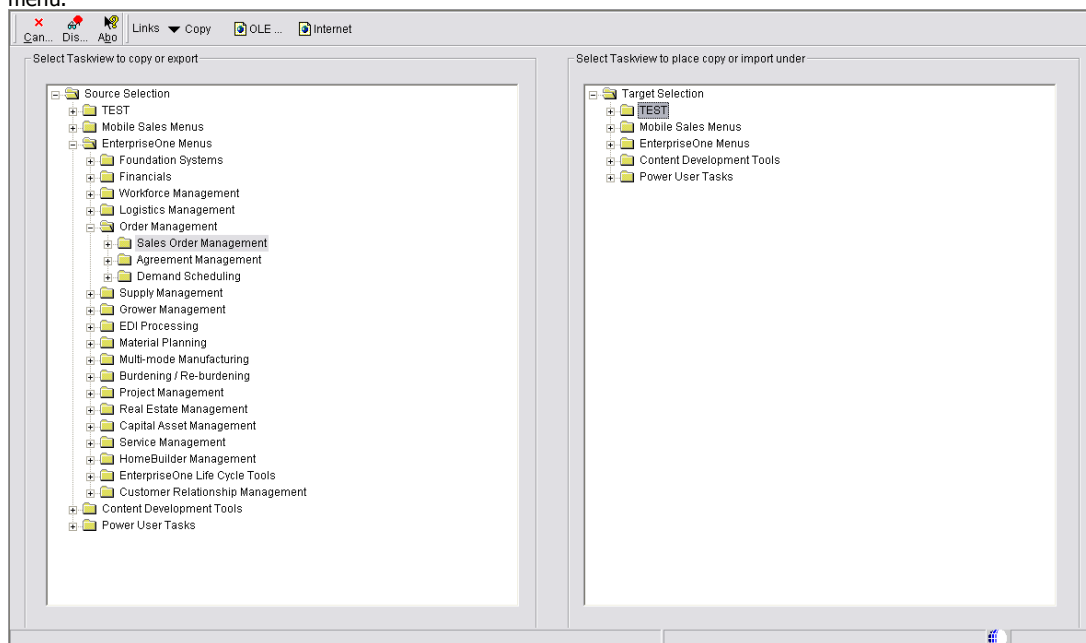
Parts of task views, or complete task views can also be exported, (transported) and imported again. During the import, the Version Workbench uses the same logic to create the tasks as during copies.

The exact version to call when using the task view Generation through the Form exit is set in the Processing Options of the Version Workbench itself (PTW98040). When blank, ZTW0001 will be used.

### 5.1 Copy

See also: Mass Copy

To copy an existing menu into a new task view, first create the new task view using the standard application P9000. Use the left tree control to select the menu to copy, and use the right tree control to select the task to contain the menu.

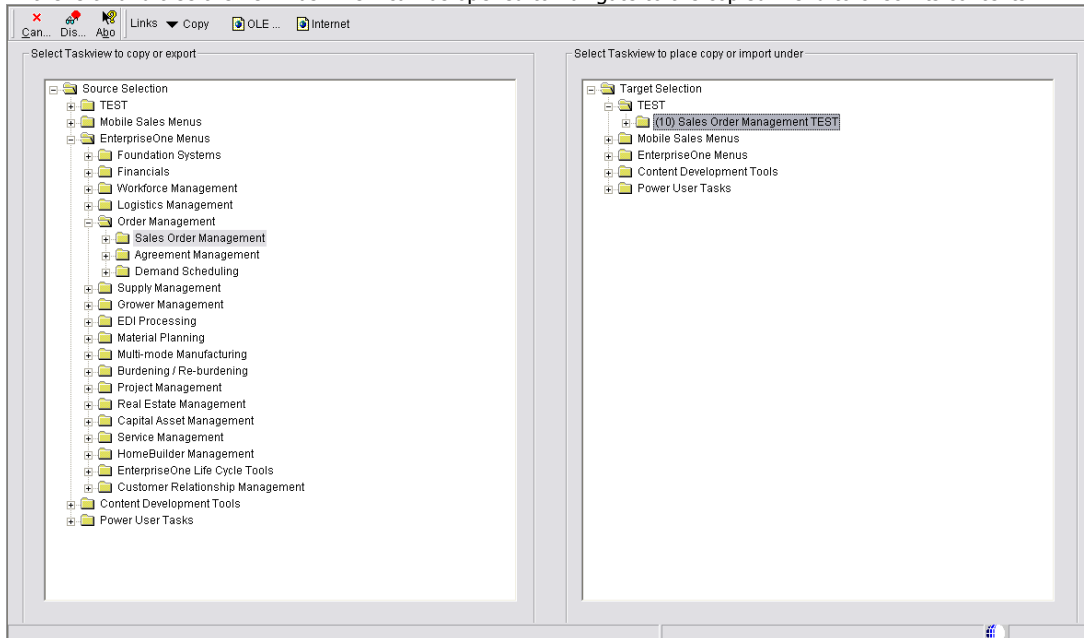


To copy task views to another level into an existing task view, select the parent task on the right hand side of the screen which should contain the copied tasks. Then use the Copy button on the Form exit bar to start the copy.

The following screen will prompt for some parameters to use when creating the copies of the tasks that will be created for the new copy of the menu.  
 The Task Description Field is the name of the menu or task view when copying menu's or task views. The default value will be the string of the source task.

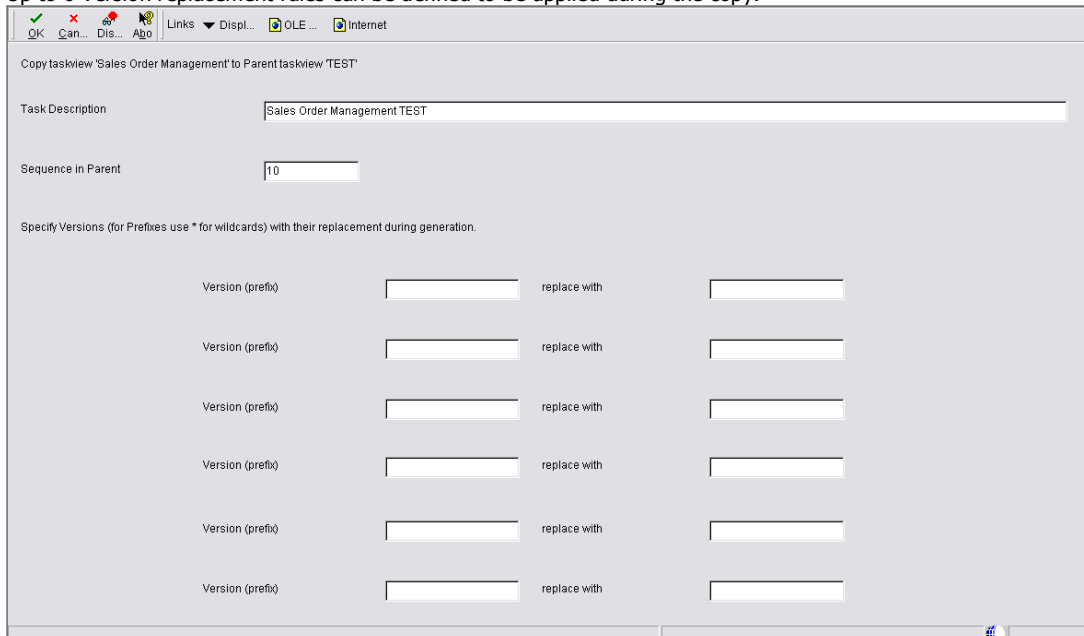


The Sequence in Parent field is relevant when copying tasks or a task menu into a menu option that already has options. This field indicates where to put the new task or task menu.  
 In the left hand tree the new Task View can be opened to navigate to the copied menu to check its contents.



### 5.1.1 Version replacement

Up to 6 Version replacement rules can be defined to be applied during the copy.

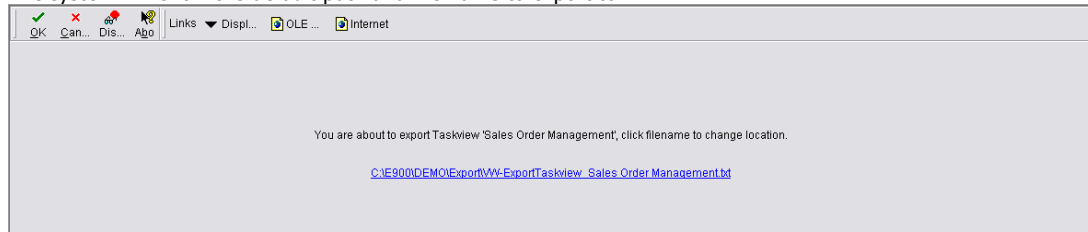


Note: Whether Versions actually exist or not, the reference to the new Version is changed using the Version Replacement rules.

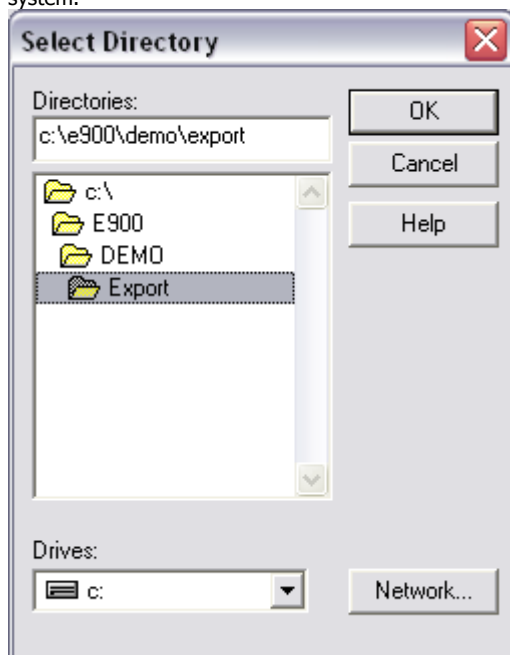
## 5.2 Export

To export (part of) a task view, select the parent level under which all tasks need to be exported to a system file and click the Export button from the Form Exit bar.

The system will show the default path and file name to export to.



Click this name to bring up the dialogue box to change this to another location. Click OK to export the file to the file system.



All the information to regenerate the task view in another system, at another point in the same task view, or in another environment is contained in the file.

### 5.2.1 Review task structure

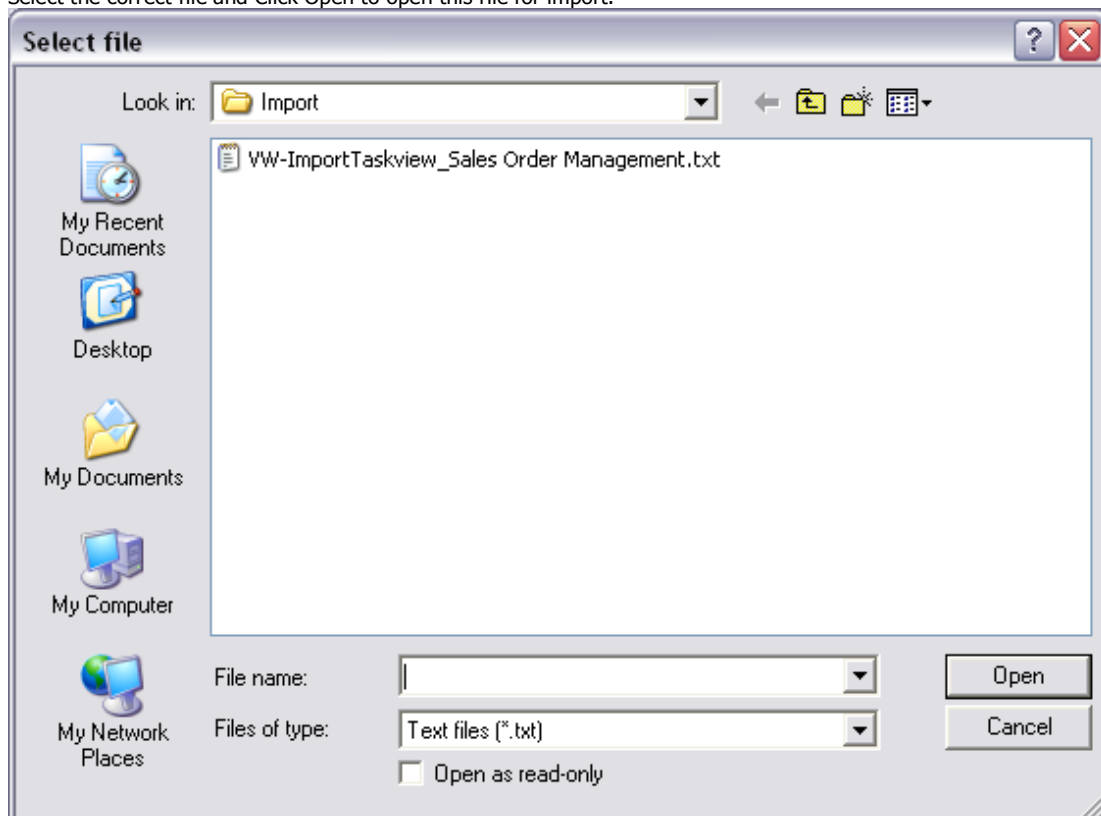
The exported file is a fixed delimited text file. This file can be sent to other systems for import of the menu described in the file, but can also be opened in Excel for further Editing.

ID	Description	Status
1	VWTE-VW3.0E900DEMO 19/06/2009Sales Order Management	
2	F900096638133300033-RHWODEVPSV-OMTURSPSPY42 Sales Order Management	7
3	F900191 B7332 B7332 96638133300033-RHWODEVPSV-OMTURSPSPY9663813330003c-RHWODEVPSV-OMTURSPSPY3	1 0 YN
4	F90009663813330003c-RHWODEVPSV-OMTURSPSPY4231 Sales Order Advanced & Technical Ops	7
5	F900191 B7332 B7332 9663813330003c-RHWODEVPSV-OMTURSPSPY11159267100000-GHQJSYRRRU-UATTTVSXOY24	1 0 Y
6	F900011159267100000-GHQJSYRRRU-UATTTVSXOY30/G4231 View Pending Release	1 P42461 W42461A 42
7	F900191 B7332 B7332 9663813330003c-RHWODEVPSV-OMTURSPSPY9663813330003a-RHWODEVPSV-OMTURSPSPY2	1 0 YN
8	F90009663813330003a-RHWODEVPSV-OMTURSPSPY4222 Price Management	7
9	F900191 B7332 B7332 9663813330003a-RHWODEVPSV-OMTURSPSPY9663813330003d-RHWODEVPSV-OMTURSPSPY24	1 0 YN
10	F90009663813330003d-RHWODEVPSV-OMTURSPSPY42311 Advanced Price and Adjustments	7
11	F900191 B7332 B7332 9663813330003d-RHWODEVPSV-OMTURSPSPY02548328900000-GHQJRVSNUU-XUTXUPWWOY190	1 0 YN
12	F900002548328900000-GHQJRVSNUU-XUTXUPWWOY4231111 Advanced Pricing Set Up	7
13	F900191 B7332 B7332 02548328900000-GHQJRVSNUU-XUTXUPWWOY02563057000000-GHQJRVSNUU-XUTXUPWWOY10	1 0 YN
14	F900002563057000000-GHQJRVSNUU-XUTXUPWWOY4231111 Pricing Constants	7
15	F900191 B7332 B7332 02563057000000-GHQJRVSNUU-XUTXUPWWOY02563549100000-GHQJRVSNUU-XUTXUPWWOY10	1 0 YN
16	F900002563549100000-GHQJRVSNUU-XUTXUPWWOY1/G4231111 Branch Plant Constants	1 P41001
17	F900191 B7332 B7332 02563057000000-GHQJRVSNUU-XUTXUPWWOY02563543000000-GHQJRVSNUU-XUTXUPWWOY20	1 0 YN
18	F900002563543000000-GHQJRVSNUU-XUTXUPWWOY2/G4231111 Customer Billing Instructions	1 P03013 ZIDE0001 W03013A 1
19	F900191 B7332 B7332 02563057000000-GHQJRVSNUU-XUTXUPWWOY09086237000000-GHQJRVSNUU-XUTXUPWWOY30	1 0 Y
20	F90009086237000000-GHQJRVSNUU-XUTXUPWWOY2/G4231111 Promotion Status Maintenance	1 P40P02 W40P02A 0.40P
21	F900191 B7332 B7332 02548328900000-GHQJRVSNUU-XUTXUPWWOY02563061100000-GHQJRVSNUU-XUTXUPWWOY20	1 0 YN
22	F900002563061100000-GHQJRVSNUU-XUTXUPWWOY4231112 Adjustment Set Up	7
23	F900191 B7332 B7332 02563061100000-GHQJRVSNUU-XUTXUPWWOY02563560900000-GHQJRVSNUU-XUTXUPWWOY10	1 0 YN
24	F900002563560900000-GHQJRVSNUU-XUTXUPWWOY1/G4231112 Preference Hierarchy	1 P40073
25	F900191 B7332 B7332 02563061100000-GHQJRVSNUU-XUTXUPWWOY02563565800000-GHQJRVSNUU-XUTXUPWWOY20	1 0 YN
26	F900002563565800000-GHQJRVSNUU-XUTXUPWWOY2/G4231112 Item Price Groups	1 P4092 ZIDE0001 1

Note: Make sure to not to change the layout of the file as it may prevent you from being able to import it again.

## 5.2.2 Import

To import a task view, have the file containing the task view export generated earlier ready, and identify the menu to contain the imported task view. Choose the Import button from the Form Exit bar to bring up the file dialogue box to select the file to import from. Select the correct file and Click Open to open this file for import.



The system reads the import file and will prompt for errors found in the file. When read successfully, details of the tasks being imported is presented in the screen. In the "Task Description" field, a new menu description can be entered. The "Sequence in Parent" field will contain the sort sequence of this menu within the parent to which it will be copied. Click OK.

Parent Taskview selected for import: TEST

Import Details

Filename	C:\E900\DEMO\Import\WV-Import\Taskview_Sales Order Management.txt
Taskview	Sales Order Management
Date	19/06/2009
By User	DEMO
E1 Release	E900
WV Release	WV3.0

Task Description:

Sequence in Parent:

The Version Replacement Rules are presented during Import as well. Click OK.

Import taskview 'Sales Order Management' to Parent taskview 'TEST'

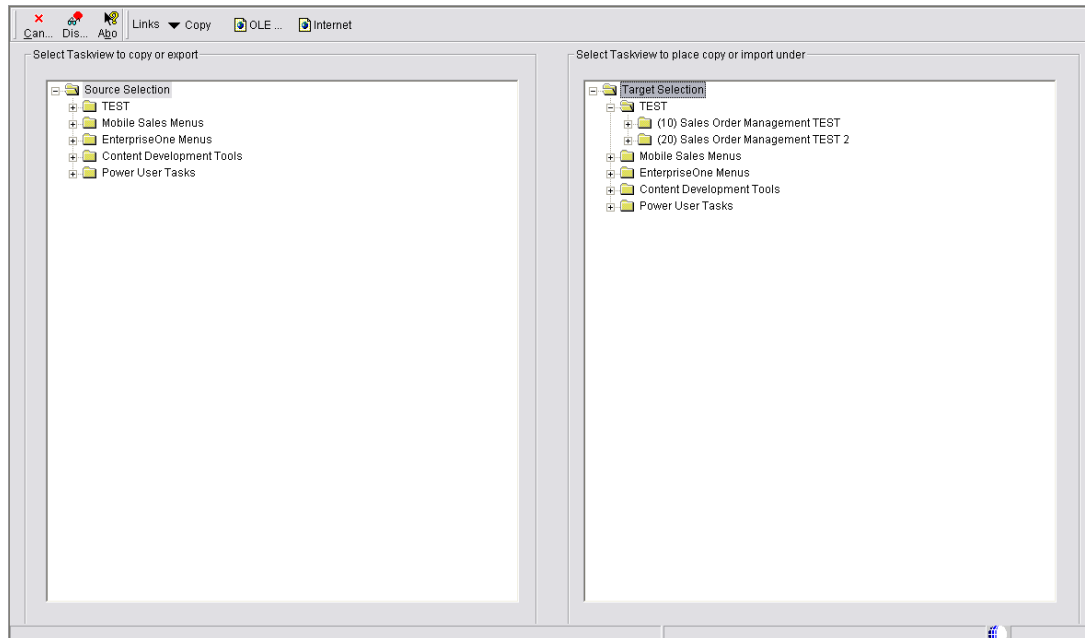
Task Description:

Sequence in Parent:

Specify Versions (for Prefixes use \* for wildcards) with their replacement during generation.

Version (prefix)	<input type="text"/>	replace with	<input type="text"/>
Version (prefix)	<input type="text"/>	replace with	<input type="text"/>
Version (prefix)	<input type="text"/>	replace with	<input type="text"/>
Version (prefix)	<input type="text"/>	replace with	<input type="text"/>
Version (prefix)	<input type="text"/>	replace with	<input type="text"/>
Version (prefix)	<input type="text"/>	replace with	<input type="text"/>

By navigating to the task view in the left hand side of the screen, the results of the import can be evaluated.



## 5.3 History Overview

All copy and import actions are logged in the Task Generation System. This allows detailed tracking of what has changed over time, but also allows easy removal of task views generated with the system.

To enter the History application, use the History button on the Form Exit bar.

The task view Generation History shows the copy and import actions that have taken place over time.

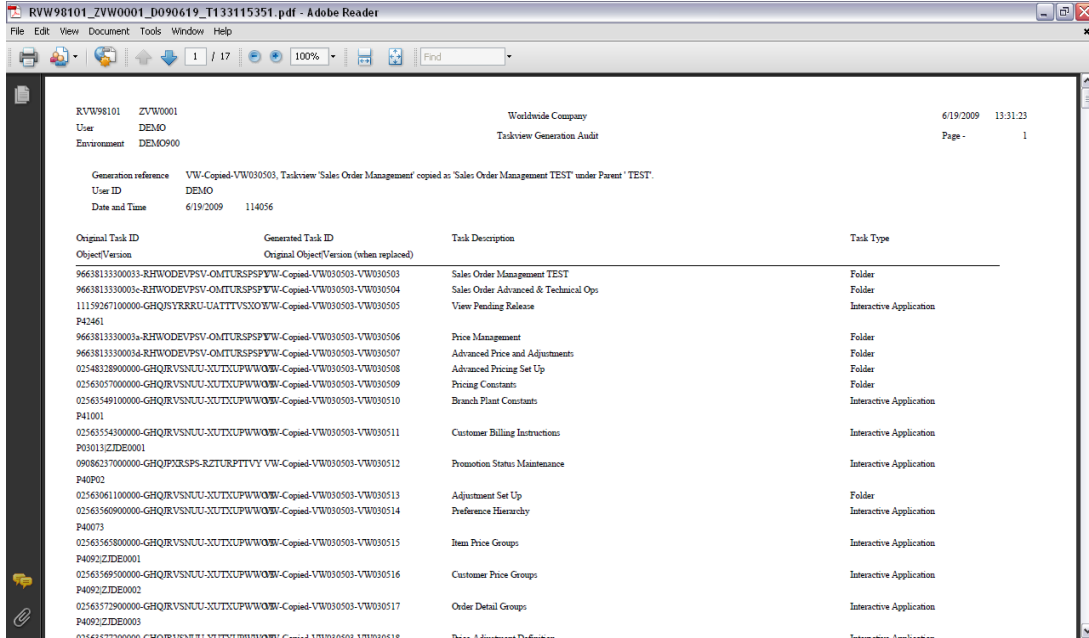
Internal Taskview Gen. Reference	Taskview Generation Description	Date Generated	Time Generated	User ID
WW-Copied-WW030503	Taskview 'Sales Order Management' copied as 'Sales Order Manage	6/19/2009	114056	DEMO
WW-Imported-WW031077	Exported Taskview 'Sales Order Management' imported as 'Sales Or	6/19/2009	125538	DEMO

Click Select or use the Details button on the Row Exit bar to see the details of a copied or imported task view.

Original Task ID	Generated Task ID	Generated Task Description	Task Type	Description	Object Name	Version
96638133300033-RH	WW-Copied-WW030503	Sales Order Management TEST	07	Folder		
9663813330003c-RH	WW-Copied-WW030503	Sales Order Advanced & Technical Ops	07	Folder		
11159267100000-GH	WW-Copied-WW030503	View Pending Release	01	Interactive Application	P42461	
9663813330003a-RH	WW-Copied-WW030503	Price Management	07	Folder		
9663813330003d-RH	WW-Copied-WW030503	Advanced Price and Adjustments	07	Folder		
02548328900000-GH	WW-Copied-WW030503	Advanced Pricing Set Up	07	Folder		
02563057000000-GH	WW-Copied-WW030503	Pricing Constants	07	Folder		
02563549100000-GH	WW-Copied-WW030503	Branch Plant Constants	01	Interactive Application	P41001	
02563554300000-GH	WW-Copied-WW030503	Customer Billing Instructions	01	Interactive Application	P03013	ZJDE0001
09086237000000-GH	WW-Copied-WW030503	Promotion Status Maintenance	01	Interactive Application	P40P02	
02563061100000-GH	WW-Copied-WW030503	Adjustment Set Up	07	Folder		
02563560900000-GH	WW-Copied-WW030503	Preference Hierarchy	01	Interactive Application	P40073	
02563565800000-GH	WW-Copied-WW030503	Item Price Groups	01	Interactive Application	P4092	ZJDE0001
02563569500000-GH	WW-Copied-WW030503	Customer Price Groups	01	Interactive Application	P4092	ZJDE0002
02563572900000-GH	WW-Copied-WW030503	Order Detail Groups	01	Interactive Application	P4092	ZJDE0003
02563577200000-GH	WW-Copied-WW030503	Price Adjustment Definition	01	Interactive Application	P4071	ZJDE0001
02563583600000-GH	WW-Copied-WW030503	Price & Adjustment Detail Revisions	01	Interactive Application	P4072	ZJDE0001
02563588200000-GH	WW-Copied-WW030503	Price & Adjustment Schedule Revisions	01	Interactive Application	P4070	ZJDE0001

### 5.3.1 Audit report

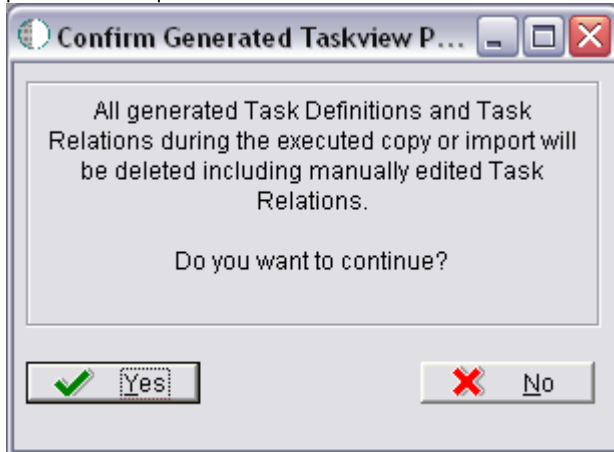
By clicking the Audit Report button on the Report Exit bar a detailed tracking report (RVW98101) can be generated. The version used can be set in the task view Generation program.



### 5.3.2 Undo/Delete

All copy and import actions are logged in the Task Generation System that also allows easy removal of task views generated with the system.

To undo/delete a copy or import action, use the Undo button on the Row Exit bar. An additional dialogue is presented to request confirmation for the delete or undo action initiated.



Tasks manually created under a copied task view tree will not be deleted, but relationships will be removed when deleting the containing task view.

## 6. Configuration

### 6.1 Role/status/path code for OMW development

The allowed role, status and path code for OMW development can be entered by clicking the Configuration button from the Form Exit bar.

Path Code	User	Project Status	Status Description	User Role	Role Description
DV900	*PUBLIC	21	Programming	02	Developer
PD900	*PUBLIC	38		06	PVC Administrator
PY900	*PUBLIC	26	QA Test/Review	04	Quality Assurance

In this grid one can select the path codes, User names, Project statuses and User roles. Using the Defaults button from the Form Exit bar the factory defaults can be loaded.

Path Code	User	Project Status	Status Description	User Role	Role Description
DEMO	*PUBLIC	21	Programming	02	Developer
DV7333	*PUBLIC	21	Programming	02	Developer
DV7334	*PUBLIC	21	Programming	02	Developer
DV810	*PUBLIC	21	Programming	02	Developer
DV811	*PUBLIC	21	Programming	02	Developer
DV812	*PUBLIC	21	Programming	02	Developer
DV900	*PUBLIC	21	Programming	02	Developer
PD7333	*PUBLIC	38		06	PVC Administrator
PD7334	*PUBLIC	38		06	PVC Administrator
PD810	*PUBLIC	38		06	PVC Administrator
PD811	*PUBLIC	38		06	PVC Administrator
PD812	*PUBLIC	38		06	PVC Administrator
PD900	*PUBLIC	38		06	PVC Administrator
PY7333	*PUBLIC	26	QA Test/Review	04	Quality Assurance
PY7334	*PUBLIC	26	QA Test/Review	04	Quality Assurance
PY810	*PUBLIC	26	QA Test/Review	04	Quality Assurance
PY811	*PUBLIC	26	QA Test/Review	04	Quality Assurance
PY812	*PUBLIC	26	QA Test/Review	04	Quality Assurance
PY900	*PUBLIC	26	QA Test/Review	04	Quality Assurance

## 6.2 Release

The current release levels can be obtained by clicking the Version Workbench link on the right hand side of the Version Workbench main screen.

